

MEPE Antibody (N-term)

Affinity Purified Rabbit Polyclonal Antibody (Pab)

Catalog # AP12395a

Product Information

Application	WB, E
Primary Accession	Q9NQ76
Other Accession	NP_001171626.1 , NP_001171623.1 , NP_064588.1
Reactivity	Human
Host	Rabbit
Clonality	Polyclonal
Isotype	Rabbit IgG
Clone Names	RB31363
Calculated MW	58419
Antigen Region	19-48

Additional Information

Gene ID	56955
Other Names	Matrix extracellular phosphoglycoprotein, Osteoblast/osteocyte factor 45, OF45, MEPE
Target/Specificity	This MEPE antibody is generated from rabbits immunized with a KLH conjugated synthetic peptide between 19-48 amino acids from the N-terminal region of human MEPE.
Dilution	WB~~1:1000 E~~Use at an assay dependent concentration.
Format	Purified polyclonal antibody supplied in PBS with 0.09% (W/V) sodium azide. This antibody is purified through a protein A column, followed by peptide affinity purification.
Storage	Maintain refrigerated at 2-8°C for up to 2 weeks. For long term storage store at -20°C in small aliquots to prevent freeze-thaw cycles.
Precautions	MEPE Antibody (N-term) is for research use only and not for use in diagnostic or therapeutic procedures.

Protein Information

Name	MEPE
Function	Promotes renal phosphate excretion and inhibits intestinal phosphate absorption (PubMed: 14962809 , PubMed: 19005008). Promotes bone mineralization by osteoblasts and cartilage mineralization by chondrocytes

(PubMed:[18162525](#), PubMed:[19998030](#), PubMed:[22766095](#)). Regulates the mineralization of the extracellular matrix of the craniofacial complex, such as teeth, bone and cartilage (By similarity). Promotes dental pulp stem cell proliferation and differentiation (PubMed:[22341070](#)).

Cellular Location

Secreted, extracellular space, extracellular matrix Secreted

Tissue Location

Detected in urine (at protein level) (PubMed:37453717). Expressed by osteoblasts (PubMed:10945470, PubMed:11414762, PubMed:15108058). Expressed by stem cells in dental pulp (PubMed:15153459). Expressed by mesenchymal cells in dental papilla and dental pulp (PubMed:18547474, PubMed:22341070). Expressed in teeth, specifically in deciduous dentin (PubMed:20581062). Expressed in odontoblasts (PubMed:12489176). Expressed in salivary glands (PubMed:15329369). Secreted from oncogenic hypophosphatemic tumors (PubMed:11414762).

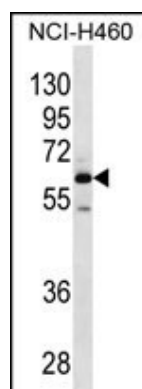
Background

MEPE seems to play a role in mineralization.

References

Boskey, A.L., et al. Calcif. Tissue Int. 86(1):42-46(2010)
Pereira, R.C., et al. Bone 45(6):1161-1168(2009)
Yerges, L.M., et al. J. Bone Miner. Res. 24(12):2039-2049(2009)
Rivadeneira, F., et al. Nat. Genet. 41(11):1199-1206(2009)
Marks, J., et al. J. Am. Soc. Nephrol. 19(12):2313-2320(2008)

Images



MEPE Antibody (N-term) (Cat. #AP12395a) western blot analysis in NCI-H460 cell line lysates (35ug/lane). This demonstrates the MEPE antibody detected the MEPE protein (arrow).

Please note: All products are 'FOR RESEARCH USE ONLY. NOT FOR USE IN DIAGNOSTIC OR THERAPEUTIC PROCEDURES'.