

# CCNL2 Antibody (Center)

Affinity Purified Rabbit Polyclonal Antibody (Pab)

Catalog # AP12396c

## Product Information

---

<b>Application</b>	WB, E
<b>Primary Accession</b>	<a href="#">Q96S94</a>
<b>Other Accession</b>	<a href="#">NP_001034666.1</a> , <a href="#">NP_112199.2</a>
<b>Reactivity</b>	Human
<b>Host</b>	Rabbit
<b>Clonality</b>	Polyclonal
<b>Isotype</b>	Rabbit IgG
<b>Clone Names</b>	RB31365
<b>Calculated MW</b>	58147
<b>Antigen Region</b>	338-366

## Additional Information

---

<b>Gene ID</b>	81669
<b>Other Names</b>	Cyclin-L2, Paneth cell-enhanced expression protein, CCNL2
<b>Target/Specificity</b>	This CCNL2 antibody is generated from rabbits immunized with a KLH conjugated synthetic peptide between 338-366 amino acids from the Central region of human CCNL2.
<b>Dilution</b>	WB~~1:1000 E~~Use at an assay dependent concentration.
<b>Format</b>	Purified polyclonal antibody supplied in PBS with 0.09% (W/V) sodium azide. This antibody is purified through a protein A column, followed by peptide affinity purification.
<b>Storage</b>	Maintain refrigerated at 2-8°C for up to 2 weeks. For long term storage store at -20°C in small aliquots to prevent freeze-thaw cycles.
<b>Precautions</b>	CCNL2 Antibody (Center) is for research use only and not for use in diagnostic or therapeutic procedures.

## Protein Information

---

<b>Name</b>	CCNL2
<b>Function</b>	Involved in pre-mRNA splicing. May induce cell death, possibly by acting on the transcription and RNA processing of apoptosis-related factors.
<b>Cellular Location</b>	Nucleus speckle. Nucleus, nucleoplasm

**Tissue Location**

Widely expressed.

**Background**

---

CCNL2 is a transcriptional regulator which participates in regulating the pre-mRNA splicing process. Also modulates the expression of critical apoptotic factor, leading to cell apoptosis.

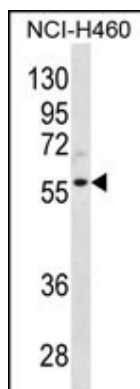
**References**

---

Loyer, P., et al. J. Biol. Chem. 283(12):7721-7732(2008)  
Herrmann, A., et al. FASEB J. 21(12):3142-3152(2007)  
Sugiyama, N., et al. Mol. Cell Proteomics 6(6):1103-1109(2007)  
Olsen, J.V., et al. Cell 127(3):635-648(2006)  
Olsen, J.V., et al. Cell 127(3):635-648(2006)

**Images**

---



CCNL2 Antibody (Center) (Cat. #AP12396c) western blot analysis in NCI-H460 cell line lysates (35ug/lane). This demonstrates the CCNL2 antibody detected the CCNL2 protein (arrow).

Please note: All products are 'FOR RESEARCH USE ONLY. NOT FOR USE IN DIAGNOSTIC OR THERAPEUTIC PROCEDURES'.