

I23O2 Antibody (C-term)

Affinity Purified Rabbit Polyclonal Antibody (Pab)

Catalog # AP12406b

Product Information

Application	WB, IHC-P, E
Primary Accession	Q6ZQW0
Other Accession	NP_919270.2
Reactivity	Human
Host	Rabbit
Clonality	Polyclonal
Isotype	Rabbit IgG
Clone Names	RB31430
Calculated MW	45424
Antigen Region	267-295

Additional Information

Gene ID	169355
Other Names	Indoleamine 2, 3-dioxygenase 2, IDO-2, 11311-, Indoleamine 2, 3-dioxygenase-like protein 1, Indoleamine-pyrrole 2, 3-dioxygenase-like protein 1, IDO2, INDOL1
Target/Specificity	This I23O2 antibody is generated from rabbits immunized with a KLH conjugated synthetic peptide between 267-295 amino acids from the C-terminal region of human I23O2.
Dilution	WB~~1:2000 IHC-P~~1:100~500 E~~Use at an assay dependent concentration.
Format	Purified polyclonal antibody supplied in PBS with 0.09% (W/V) sodium azide. This antibody is purified through a protein A column, followed by peptide affinity purification.
Storage	Maintain refrigerated at 2-8°C for up to 2 weeks. For long term storage store at -20°C in small aliquots to prevent freeze-thaw cycles.
Precautions	I23O2 Antibody (C-term) is for research use only and not for use in diagnostic or therapeutic procedures.

Protein Information

Name	IDO2 (HGNC:27269)
Function	Catalyzes the first and rate limiting step of the catabolism of the essential amino acid tryptophan along the kynurenine pathway (PubMed: 17671174).

Involved in immune regulation. May not play a significant role in tryptophan-related tumoral resistance (PubMed:[25691885](#)).

Tissue Location

Detected in liver, small intestine, spleen, placenta, thymus, lung, brain, kidney, and colon (PubMed:17671174) Also expressed at low level in testis and thyroid. Not expressed in the majority of human tumor samples (>99%) (PubMed:25691885)

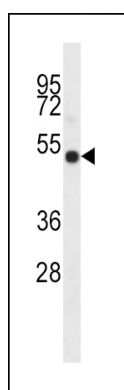
Background

Along with the enzymes encoded by the INDO (MIM 147435) and TDO2 (MIM 191070) genes, the enzyme encoded by the INDOL1 gene metabolizes tryptophan in the kynurenine pathway (Ball et al., 2007 [PubMed 17499941]).

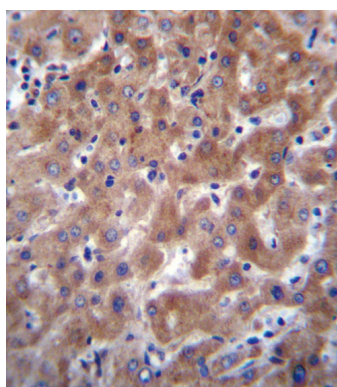
References

Cetindere, T., et al. Cell. Signal. 22(2):197-211(2010)
Huttunen, R., et al. Shock 33(2):149-154(2010)
Witkiewicz, A.K., et al. J. Am. Coll. Surg. 208(5):781-787(2009)
Metz, R., et al. Cancer Res. 67(15):7082-7087(2007)
Ball, H.J., et al. Gene 396(1):203-213(2007)

Images



I23O2 Antibody (C-term) (Cat. #AP12406b) western blot analysis in K562 cell line lysates (35ug/lane). This demonstrates the I23O2 antibody detected the I23O2 protein (arrow).



I23O2 Antibody (C-term) (Cat. #AP12406b) immunohistochemistry analysis in formalin fixed and paraffin embedded human liver tissue followed by peroxidase conjugation of the secondary antibody and DAB staining. This data demonstrates the use of I23O2 Antibody (C-term) for immunohistochemistry. Clinical relevance has not been evaluated.

Please note: All products are 'FOR RESEARCH USE ONLY. NOT FOR USE IN DIAGNOSTIC OR THERAPEUTIC PROCEDURES'.