

VSGP/F-spondin Antibody (N-term)

Affinity Purified Rabbit Polyclonal Antibody (Pab)

Catalog # AP12414a

Product Information

Application	WB, E
Primary Accession	Q9HCB6
Other Accession	Q9GLX9 , NP_006099.2
Reactivity	Human, Rat, Mouse
Predicted	Bovine
Host	Rabbit
Clonality	Polyclonal
Isotype	Rabbit IgG
Clone Names	RB18792
Calculated MW	90973
Antigen Region	15-43

Additional Information

Gene ID	10418
Other Names	Spondin-1, F-spondin, Vascular smooth muscle cell growth-promoting factor, SPON1, KIAA0762, VSGP
Target/Specificity	This VSGP/F-spondin antibody is generated from rabbits immunized with a KLH conjugated synthetic peptide between 15-43 amino acids from the N-terminal region of human VSGP/F-spondin.
Dilution	WB~~1:1000 E~~Use at an assay dependent concentration.
Format	Purified polyclonal antibody supplied in PBS with 0.09% (W/V) sodium azide. This antibody is purified through a protein A column, followed by peptide affinity purification.
Storage	Maintain refrigerated at 2-8°C for up to 2 weeks. For long term storage store at -20°C in small aliquots to prevent freeze-thaw cycles.
Precautions	VSGP/F-spondin Antibody (N-term) is for research use only and not for use in diagnostic or therapeutic procedures.

Protein Information

Name	SPON1
Synonyms	KIAA0762, VSGP

Function	Cell adhesion protein that promotes the attachment of spinal cord and sensory neuron cells and the outgrowth of neurites in vitro. May contribute to the growth and guidance of axons in both the spinal cord and the PNS (By similarity). Major factor for vascular smooth muscle cell.
Cellular Location	Secreted, extracellular space, extracellular matrix
Tissue Location	Highest expression in lung, lower expression in brain, heart, kidney, liver and testis, and lowest expression in pancreas, skeletal muscle and ovary. Not expressed in spleen

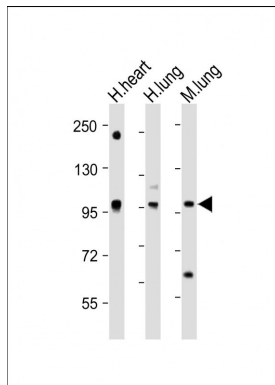
Background

Cell adhesion protein that promotes the attachment of spinal cord and sensory neuron cells and the outgrowth of neurites in vitro. May contribute to the growth and guidance of axons in both the spinal cord and the PNS (By similarity). Major factor for vascular smooth muscle cell.

References

Rose, J. Phd, et al. Mol. Med. (2010) In press :
Attur, M.G., et al. FASEB J. 23(1):79-89(2009)
Tan, K., et al. J. Mol. Biol. 381(5):1213-1223(2008)
Kitagawa, M., et al. Biochem. Biophys. Res. Commun. 349(3):1050-1056(2006)
Pyle-Chenault, R.A., et al. Tumour Biol. 26(5):245-257(2005)

Images



All lanes : Anti-VSGP/F-spondin Antibody (N-term) at 1:2000 dilution Lane 1: Human heart lysate Lane 2: Human lung lysate Lane 3: Mouse lung lysate Lysates/proteins at 20 µg per lane. Secondary Goat Anti-Rabbit IgG, (H+L), Peroxidase conjugated at 1/10000 dilution. Predicted band size : 91 kDa Blocking/Dilution buffer: 5% NFDM/TBST.

Please note: All products are 'FOR RESEARCH USE ONLY. NOT FOR USE IN DIAGNOSTIC OR THERAPEUTIC PROCEDURES'.