

SENP7 Antibody (C-term)

Purified Rabbit Polyclonal Antibody (Pab)

Catalog # AP1241a

Product Information

| | |
|-------------------|------------------------|
| Application | WB, E |
| Primary Accession | Q9BQF6 |
| Other Accession | A7MBJ2 |
| Reactivity | Human, Mouse |
| Predicted | Bovine |
| Host | Rabbit |
| Clonality | Polyclonal |
| Isotype | Rabbit IgG |
| Clone Names | RB4503 |
| Calculated MW | 119658 |
| Antigen Region | 709-740 |

Additional Information

| | |
|--------------------|---|
| Gene ID | 57337 |
| Other Names | Sentrin-specific protease 7, SUMO-1-specific protease 2, Sentrin/SUMO-specific protease SENP7, SENP7, KIAA1707, SSP2, SUSP2 |
| Target/Specificity | This SENP7 antibody is generated from rabbits immunized with a KLH conjugated synthetic peptide between 709-740 amino acids from the C-terminal region of human SENP7. |
| Dilution | WB~~1:1000 E~~Use at an assay dependent concentration. |
| Format | Purified polyclonal antibody supplied in PBS with 0.09% (W/V) sodium azide. This antibody is prepared by Saturated Ammonium Sulfate (SAS) precipitation followed by dialysis against PBS. |
| Storage | Maintain refrigerated at 2-8°C for up to 2 weeks. For long term storage store at -20°C in small aliquots to prevent freeze-thaw cycles. |
| Precautions | SENP7 Antibody (C-term) is for research use only and not for use in diagnostic or therapeutic procedures. |

Protein Information

| | |
|----------|--|
| Name | SENP7 {ECO:0000303 Ref.2, ECO:0000312 HGNC:HGNC:30402} |
| Function | Protease that acts as a positive regulator of the cGAS-STING pathway by catalyzing desumoylation of CGAS. Desumoylation of CGAS promotes |

DNA-binding activity of CGAS, subsequent oligomerization and activation (By similarity). Deconjugates SUMO2 and SUMO3 from targeted proteins, but not SUMO1 (PubMed:[18799455](#)). Catalyzes the deconjugation of poly-SUMO2 and poly-SUMO3 chains (PubMed:[18799455](#)). Has very low efficiency in processing full-length SUMO proteins to their mature forms (PubMed:[18799455](#)).

Cellular Location

Cytoplasm {ECO:0000250|UniProtKB:Q8BUH8}.

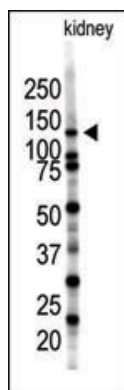
Background

SEN7 is a protease that may be involved in two essential functions in the SUMO pathway: processing of full-length SUMO1, SUMO2 and SUMO3 to their mature conjugatable forms and/or deconjugation of SUMO1, SUMO2 and SUMO3 from targeted substrate proteins.

References

Wiemann, S., et al., Genome Res. 11(3):422-435 (2001).
Nagase, T., et al., DNA Res. 7(6):347-355 (2000).

Images



Western blot analysis of SENP7 polyclonal antibody (Cat. #AP1241a) in mouse kidney tissue lysate (35ug/lane). SENP7(arrow) was detected using the purified Pab.

Please note: All products are 'FOR RESEARCH USE ONLY. NOT FOR USE IN DIAGNOSTIC OR THERAPEUTIC PROCEDURES'.