

TFR2 Antibody (C-term)

Affinity Purified Rabbit Polyclonal Antibody (Pab)

Catalog # AP12449b

Product Information

Application	WB, E
Primary Accession	Q9UP52
Other Accession	NP_003218.2
Reactivity	Human
Host	Rabbit
Clonality	Polyclonal
Isotype	Rabbit IgG
Clone Names	RB31268
Calculated MW	88755
Antigen Region	674-703

Additional Information

Gene ID	7036
Other Names	Transferrin receptor protein 2, Tfr2, TFR2
Target/Specificity	This TFR2 antibody is generated from rabbits immunized with a KLH conjugated synthetic peptide between 674-703 amino acids from the C-terminal region of human TFR2.
Dilution	WB~~1:1000 E~~Use at an assay dependent concentration.
Format	Purified polyclonal antibody supplied in PBS with 0.09% (W/V) sodium azide. This antibody is purified through a protein A column, followed by peptide affinity purification.
Storage	Maintain refrigerated at 2-8°C for up to 2 weeks. For long term storage store at -20°C in small aliquots to prevent freeze-thaw cycles.
Precautions	TFR2 Antibody (C-term) is for research use only and not for use in diagnostic or therapeutic procedures.

Protein Information

Name	TFR2
Function	Mediates cellular uptake of transferrin-bound iron in a non- iron dependent manner. May be involved in iron metabolism, hepatocyte function and erythrocyte differentiation.

Cellular Location

Cell membrane; Single-pass type II membrane protein

Tissue Location

Predominantly expressed in liver. While the alpha form is also expressed in spleen, lung, muscle, prostate and peripheral blood mononuclear cells, the beta form is expressed in all tissues tested, albeit weakly

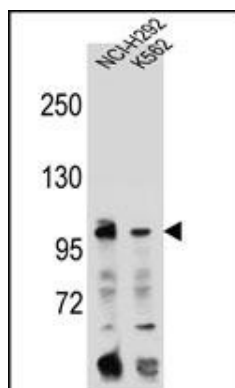
Background

This gene is a member of the transferrin receptor-like family and encodes a single-pass type II membrane protein with a protease associated (PA) domain, an M28 peptidase domain and a transferrin receptor-like dimerization domain. This protein mediates cellular uptake of transferrin-bound iron and mutations in this gene have been associated with hereditary hemochromatosis type III. Alternatively spliced variants which encode different protein isoforms have been described; however, not all variants have been fully characterized.

References

Bailey, S.D., et al. Diabetes Care 33(10):2250-2253(2010)
Ucisik-Akkaya, E., et al. Mol. Hum. Reprod. 16(10):770-777(2010)
Ikuta, K., et al. J. Mol. Biol. 397(2):375-384(2010)
Talmud, P.J., et al. Am. J. Hum. Genet. 85(5):628-642(2009)
Volke, M., et al. PLoS ONE 4 (11), E7875 (2009) :

Images



TFR2 Antibody (C-term) (Cat. #AP12449b) western blot analysis in NCI-H292,K562 cell line lysates (35ug/lane).This demonstrates the TFR2 antibody detected the TFR2 protein (arrow).

Please note: All products are 'FOR RESEARCH USE ONLY. NOT FOR USE IN DIAGNOSTIC OR THERAPEUTIC PROCEDURES'.