

# LRRC67 Antibody (C-term)

Affinity Purified Rabbit Polyclonal Antibody (Pab)

Catalog # AP12456b

## Product Information

---

Application	WB, E
Primary Accession	<a href="#">Q7Z4L9</a>
Other Accession	<a href="#">Q4R803</a> , <a href="#">NP_001013648.1</a>
Reactivity	Human
Predicted	Monkey
Host	Rabbit
Clonality	Polyclonal
Isotype	Rabbit IgG
Clone Names	RB31508
Calculated MW	35480
Antigen Region	238-266

## Additional Information

---

Gene ID	286187
Other Names	Protein phosphatase 1 regulatory subunit 42, Leucine-rich repeat-containing protein 67, PPP1R42, LRRC67
Target/Specificity	This LRRC67 antibody is generated from rabbits immunized with a KLH conjugated synthetic peptide between 238-266 amino acids from the C-terminal region of human LRRC67.
Dilution	WB~~1:1000 E~~Use at an assay dependent concentration.
Format	Purified polyclonal antibody supplied in PBS with 0.09% (W/V) sodium azide. This antibody is purified through a protein A column, followed by peptide affinity purification.
Storage	Maintain refrigerated at 2-8°C for up to 2 weeks. For long term storage store at -20°C in small aliquots to prevent freeze-thaw cycles.
Precautions	LRRC67 Antibody (C-term) is for research use only and not for use in diagnostic or therapeutic procedures.

## Protein Information

---

Name	PPP1R42 ( <a href="#">HGNC:33732</a> )
Synonyms	LRRC67

<b>Function</b>	Regulates phosphatase activity of protein phosphatase 1 (PP1) complexes in the testis.
<b>Cellular Location</b>	Cytoplasm, cytoskeleton {ECO:0000250 UniProtKB:Q8R1Z4}. Cytoplasm, cytoskeleton, microtubule organizing center, centrosome {ECO:0000250 UniProtKB:Q8R1Z4} Note=Colocalizes with alpha tubulin to the manchette of developing spermatids. Detected to nuclear rim in pachytene spermatocytes Detected at nuclear surface, opposite the acrosome in elongating spermatids. Detected at the microtubule-organizing center (MTOC) Localized to the centrosomal region of late-stage spermatids (By similarity). {ECO:0000250 UniProtKB:Q8R1Z4}

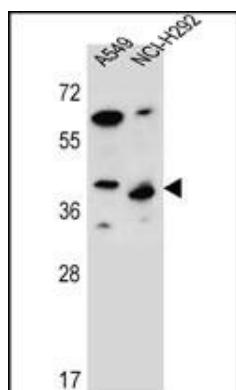
## References

---

Strausberg, R.L., et al. Proc. Natl. Acad. Sci. U.S.A. 99(26):16899-16903(2002)

## Images

---



LRRC67 Antibody (C-term) (Cat. #AP12456b) western blot analysis in A549, NCI-H292 cell line lysates (35ug/lane). This demonstrates the LRRC67 antibody detected the LRRC67 protein (arrow).

Please note: All products are 'FOR RESEARCH USE ONLY. NOT FOR USE IN DIAGNOSTIC OR THERAPEUTIC PROCEDURES'.