

STX2 Antibody (Center)

Affinity Purified Rabbit Polyclonal Antibody (Pab)

Catalog # AP12469c

Product Information

Application	WB, IHC-P, E
Primary Accession	P32856
Other Accession	NP_001971.2 , NP_919337.1
Reactivity	Human, Mouse
Host	Rabbit
Clonality	Polyclonal
Isotype	Rabbit IgG
Clone Names	RB12390
Calculated MW	33341
Antigen Region	123-152

Additional Information

Gene ID	2054
Other Names	Syntaxin-2, Epimorphin, STX2, EPIM, STX2A, STX2B, STX2C
Target/Specificity	This STX2 antibody is generated from rabbits immunized with a KLH conjugated synthetic peptide between 123-152 amino acids from the Central region of human STX2.
Dilution	WB~~1:1000 IHC-P~~1:100~500 E~~Use at an assay dependent concentration.
Format	Purified polyclonal antibody supplied in PBS with 0.09% (W/V) sodium azide. This antibody is purified through a protein A column, followed by peptide affinity purification.
Storage	Maintain refrigerated at 2-8°C for up to 2 weeks. For long term storage store at -20°C in small aliquots to prevent freeze-thaw cycles.
Precautions	STX2 Antibody (Center) is for research use only and not for use in diagnostic or therapeutic procedures.

Protein Information

Name	STX2
Synonyms	EPIM, STX2A, STX2B, STX2C
Function	Essential for epithelial morphogenesis. May mediate Ca(2+)- regulation of exocytosis acrosomal reaction in sperm.

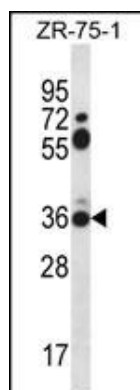
Background

The product of this gene belongs to the syntaxin/epimorphin family of proteins. The syntaxins are a large protein family implicated in the targeting and fusion of intracellular transport vesicles. The product of this gene regulates epithelial-mesenchymal interactions and epithelial cell morphogenesis and activation. Alternatively spliced transcript variants encoding different isoforms have been identified.

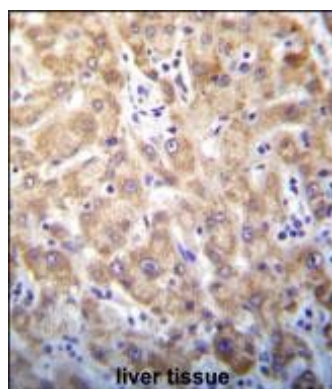
References

Chen, C.S., et al. J. Biol. Chem. 284(11):6877-6884(2009)
Okugawa, Y., et al. J. Invest. Dermatol. 128(8):1884-1893(2008)
Flaumenhaft, R., et al. Blood 110(5):1492-1501(2007)
Low, S.H., et al. Mol. Biol. Cell 17(2):977-989(2006)
Band, A.M., et al. BMC Cell Biol. 6 (1), 26 (2005) :

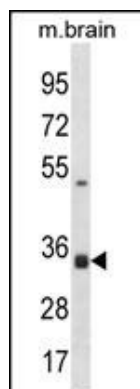
Images



STX2 Antibody (Center) (Cat. #AP12469c) western blot analysis in ZR-75-1 cell line lysates (35ug/lane). This demonstrates the STX2 antibody detected the STX2 protein (arrow).



STX2 Antibody (Center) (Cat. #AP12469c) immunohistochemistry analysis in formalin fixed and paraffin embedded human liver tissue followed by peroxidase conjugation of the secondary antibody and DAB staining. This data demonstrates the use of STX2 Antibody (Center) for immunohistochemistry. Clinical relevance has not been evaluated.



STX2 Antibody (Center) (Cat. #AP12469c) western blot analysis in mouse brain tissue lysates (35ug/lane). This demonstrates the STX2 antibody detected the STX2 protein (arrow).

Please note: All products are 'FOR RESEARCH USE ONLY. NOT FOR USE IN DIAGNOSTIC OR THERAPEUTIC PROCEDURES'.