

WFDC1 Antibody (C-term H163)

Affinity Purified Rabbit Polyclonal Antibody (Pab)

Catalog # AP12472b

Product Information

Application	IHC-P, WB, FC, E
Primary Accession	Q9HC57
Other Accession	NP_067020.2
Reactivity	Human
Host	Rabbit
Clonality	Polyclonal
Isotype	Rabbit IgG
Clone Names	RB19963
Calculated MW	23977
Antigen Region	148-177

Additional Information

Gene ID	58189
Other Names	WAP four-disulfide core domain protein 1, Prostate stromal protein ps20, ps20 growth inhibitor, WFDC1, PS20
Target/Specificity	This WFDC1 antibody is generated from rabbits immunized with a KLH conjugated synthetic peptide between 148-177 amino acids from the C-terminal region of human WFDC1.
Dilution	IHC-P~~1:100 WB~~1:1000 FC~~1:10~50 E~~Use at an assay dependent concentration.
Format	Purified polyclonal antibody supplied in PBS with 0.09% (W/V) sodium azide. This antibody is purified through a protein A column, followed by peptide affinity purification.
Storage	Maintain refrigerated at 2-8°C for up to 2 weeks. For long term storage store at -20°C in small aliquots to prevent freeze-thaw cycles.
Precautions	WFDC1 Antibody (C-term H163) is for research use only and not for use in diagnostic or therapeutic procedures.

Protein Information

Name	WFDC1
Synonyms	PS20

Function	Has growth inhibitory activity.
Cellular Location	Secreted.

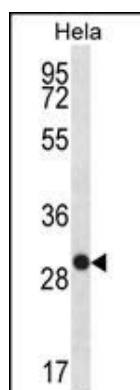
Background

This gene encodes a member of the WAP-type four disulfide core domain family. The WAP-type four-disulfide core domain, or WAP signature motif, contains eight cysteines forming four disulfide bonds at the core of the protein, and functions as a protease inhibitor in many family members. The encoded protein shares 81% amino acid identity with the rat ps20 protein, which was originally identified as a secreted growth inhibitor. This gene is mapped to chromosome 16q24, an area of frequent loss of heterozygosity in cancers, including prostate, breast and hepatocellular cancers and Wilms' tumor. Owing to its location and a possible growth inhibitory property of its gene product, this gene is suggested to be a tumor suppressor gene.

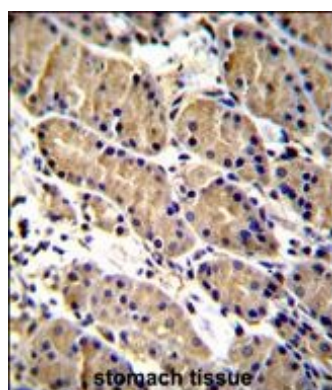
References

Briggs, F.B., et al. *Genes Immun.* 11(3):199-208(2010)
Madar, S., et al. *Carcinogenesis* 30(1):20-27(2009)
Liu, S., et al. *Clin. Exp. Metastasis* 26(7):739-749(2009)
Alvarez, R., et al. *J. Virol.* 82(1):471-486(2008)
Watson, J.E., et al. *Prostate* 61(2):192-199(2004)

Images

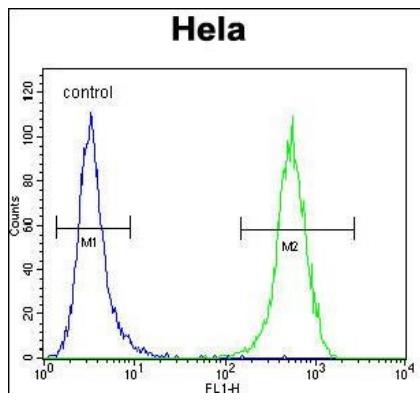


WFDC1 Antibody (C-term H163) (Cat. #AP12472b) western blot analysis in Hela cell line lysates (35ug/lane). This demonstrates the WFDC1 antibody detected the WFDC1 protein (arrow).



WFDC1 Antibody (C-term H163) (Cat. #AP12472b) immunohistochemistry analysis in formalin fixed and paraffin embedded human stomach tissue followed by peroxidase conjugation of the secondary antibody and DAB staining. This data demonstrates the use of WFDC1 Antibody (C-term H163) for immunohistochemistry. Clinical relevance has not been evaluated.

WFDC1 Antibody (C-term H163) (Cat. #AP12472b) flow cytometric analysis of Hela cells (right histogram) compared to a negative control cell (left histogram). FITC-conjugated goat-anti-rabbit secondary antibodies were used for the analysis.



Please note: All products are 'FOR RESEARCH USE ONLY. NOT FOR USE IN DIAGNOSTIC OR THERAPEUTIC PROCEDURES'.