

SOX15 Antibody (Center)

Affinity Purified Rabbit Polyclonal Antibody (Pab)

Catalog # AP12473c

Product Information

Application	IHC-P, WB, E
Primary Accession	O60248
Other Accession	NP_008873.1
Reactivity	Human, Mouse
Host	Rabbit
Clonality	Polyclonal
Isotype	Rabbit IgG
Calculated MW	25251
Antigen Region	96-125

Additional Information

Gene ID	6665
Other Names	Protein SOX-15, Protein SOX-12, Protein SOX-20, SOX15, SOX12, SOX20, SOX26, SOX27
Target/Specificity	This SOX15 antibody is generated from rabbits immunized with a KLH conjugated synthetic peptide between 96-125 amino acids from the Central region of human SOX15.
Dilution	IHC-P~~1:100~500 WB~~1:1000 E~~Use at an assay dependent concentration.
Format	Purified polyclonal antibody supplied in PBS with 0.09% (W/V) sodium azide. This antibody is purified through a protein A column, followed by peptide affinity purification.
Storage	Maintain refrigerated at 2-8°C for up to 2 weeks. For long term storage store at -20°C in small aliquots to prevent freeze-thaw cycles.
Precautions	SOX15 Antibody (Center) is for research use only and not for use in diagnostic or therapeutic procedures.

Protein Information

Name	SOX15
Synonyms	SOX12, SOX20, SOX26, SOX27
Function	Transcription factor that binds to DNA at the 5'-AACAAATG-3' consensus sequence (By similarity). Acts as a transcriptional activator and repressor (By

similarity). Binds synergistically with POU5F1 (OCT3/4) to gene promoters (By similarity). Binds to the FOXP1 promoter and recruits FHL3, resulting in transcriptional activation of FOXP1 which leads to myoblast proliferation (By similarity). Acts as an inhibitor of myoblast differentiation via transcriptional repression which leads to down-regulation of the muscle-specific genes MYOD and MYOG (By similarity). Involved in trophoblast giant cell differentiation via enhancement of HAND1 transcriptional activity (By similarity). Regulates transcription of HRC via binding to its proximal enhancer region (By similarity). Involved in skeletal muscle regeneration (By similarity). Also plays a role in the development of myogenic precursor cells (By similarity).

Cellular Location

Nucleus {ECO:0000255 | PROSITE-ProRule:PRU00267}.

Tissue Location

Widely expressed in fetal and adult tissues examined, highest level found in fetal spinal cord and adult brain and testis.

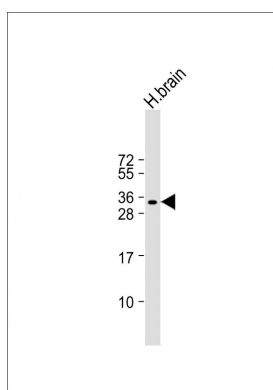
Background

This gene encodes a member of the SOX (SRY-related HMG-box) family of transcription factors involved in the regulation of embryonic development and in the determination of the cell fate. The encoded protein may act as a transcriptional regulator after forming a protein complex with other proteins. [provided by RefSeq].

References

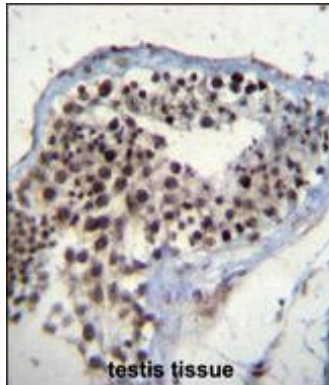
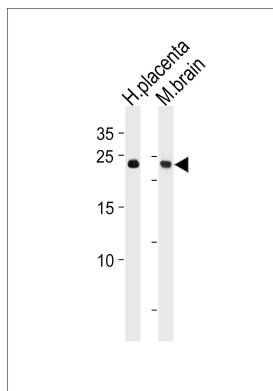
Sakai, N., et al. J. Endocrinol. 198(3):489-497(2008)
Yan, H.T., et al. Mol. Cells 24(3):323-328(2007)
Schepers, G.E., et al. Dev. Cell 3(2):167-170(2002)
Wilson, M., et al. Curr. Opin. Genet. Dev. 12(4):441-446(2002)
Miyashita, A., et al. Gene 237(1):53-60(1999)

Images



Anti-SOX15 Antibody (Center) at 1:1000 dilution + human brain lysate Lysates/proteins at 20 µg per lane. Secondary Goat Anti-Rabbit IgG, (H+L), Peroxidase conjugated at 1/10000 dilution. Predicted band size : 25 kDa
Blocking/Dilution buffer: 5% NFDM/TBST.

SOX15 Antibody (Center) (Cat. #AP12473c) western blot analysis in human placenta and mouse brain tissue lysates (35µg/lane). This demonstrates the SOX15 antibody detected the SOX15 protein (arrow).



SOX15 Antibody (Center) (Cat. #AP12473c) immunohistochemistry analysis in formalin fixed and paraffin embedded human testis tissue followed by peroxidase conjugation of the secondary antibody and DAB staining. This data demonstrates the use of SOX15 Antibody (Center) for immunohistochemistry. Clinical relevance has not been evaluated.

Please note: All products are 'FOR RESEARCH USE ONLY. NOT FOR USE IN DIAGNOSTIC OR THERAPEUTIC PROCEDURES'.