

METTL11B Antibody (N-term)

Affinity Purified Rabbit Polyclonal Antibody (Pab)

Catalog # AP12508a

Product Information

| | |
|-------------------|--|
| Application | WB, E |
| Primary Accession | Q5VY1 |
| Other Accession | D3ZVR1 , B2RXM4 , NP_001129579.1 |
| Reactivity | Mouse |
| Predicted | Rat |
| Host | Rabbit |
| Clonality | Polyclonal |
| Isotype | Rabbit IgG |
| Clone Names | RB31225 |
| Calculated MW | 32400 |
| Antigen Region | 14-42 |

Additional Information

| | |
|--------------------|--|
| Gene ID | 149281 |
| Other Names | Alpha N-terminal protein methyltransferase 1B, Methyltransferase-like protein 11B, X-Pro-Lys N-terminal protein methyltransferase 1B, NTM1B, METTL11B, C1orf184, NRMT2 |
| Target/Specificity | This METTL11B antibody is generated from rabbits immunized with a KLH conjugated synthetic peptide between 14-42 amino acids from the N-terminal region of human METTL11B. |
| Dilution | WB~~1:1000 E~~Use at an assay dependent concentration. |
| Format | Purified polyclonal antibody supplied in PBS with 0.09% (W/V) sodium azide. This antibody is purified through a protein A column, followed by peptide affinity purification. |
| Storage | Maintain refrigerated at 2-8°C for up to 2 weeks. For long term storage store at -20°C in small aliquots to prevent freeze-thaw cycles. |
| Precautions | METTL11B Antibody (N-term) is for research use only and not for use in diagnostic or therapeutic procedures. |

Protein Information

| | |
|----------|--|
| Name | NTMT2 (HGNC:31932) |
| Function | Alpha N-methyltransferase that methylates the N-terminus of target |

proteins containing the N-terminal motif [Ala/Pro/Ser]-Pro-Lys when the initiator Met is cleaved. Specifically catalyzes monomethylation of exposed alpha-amino group of Ala or Ser residue in the [Ala/Ser]-Pro-Lys motif and Pro in the Pro-Pro-Lys motif (PubMed:[24090352](#), PubMed:[30417120](#)). Predominantly functions as a mono- methyltransferase but is also able to di-/tri-methylate the GPKRIA peptide and di-methylate the PPKRIA peptide (in vitro) (PubMed:[30417120](#)). May activate NTMT1 by priming its substrates for trimethylation (PubMed:[24090352](#)).

Cellular Location

Nucleus.

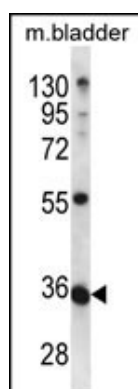
Background

METTL11B is alpha-N-methyltransferase that methylates the N-terminus of target proteins containing the N-terminal motif [Ala/Pro/Ser]-Pro-Lys when the initiator Met is cleaved. Specifically catalyzes mono-, di-or tri-methylation of exposed alpha-amino group of Ala, Pro or Ser residue in the [Ala/Pro/Ser]-Pro-Lys motif (By similarity).

References

Gregory, S.G., et al. Nature 441(7091):315-321(2006)

Images



METTL11B Antibody (N-term) (Cat. #AP12508a) western blot analysis in mouse bladder tissue lysates (35ug/lane). This demonstrates the METTL11B antibody detected the METTL11B protein (arrow).

Please note: All products are 'FOR RESEARCH USE ONLY. NOT FOR USE IN DIAGNOSTIC OR THERAPEUTIC PROCEDURES'.