

DUS1L Antibody (C-term)

Affinity Purified Rabbit Polyclonal Antibody (Pab)

Catalog # AP12520b

Product Information

Application	IHC-P, WB, E
Primary Accession	Q6P1R4
Other Accession	NP_071439.3
Reactivity	Human
Host	Rabbit
Clonality	Polyclonal
Isotype	Rabbit IgG
Clone Names	RB31482
Calculated MW	53230
Antigen Region	321-349

Additional Information

Gene ID	64118
Other Names	tRNA-dihydrouridine(16/17) synthase [NAD(P)(+)]-like, 131-, tRNA-dihydrouridine synthase 1-like, DUS1L
Target/Specificity	This DUS1L antibody is generated from rabbits immunized with a KLH conjugated synthetic peptide between 321-349 amino acids from the C-terminal region of human DUS1L.
Dilution	IHC-P~~1:100~500 WB~~1:1000 E~~Use at an assay dependent concentration.
Format	Purified polyclonal antibody supplied in PBS with 0.09% (W/V) sodium azide. This antibody is purified through a protein A column, followed by peptide affinity purification.
Storage	Maintain refrigerated at 2-8°C for up to 2 weeks. For long term storage store at -20°C in small aliquots to prevent freeze-thaw cycles.
Precautions	DUS1L Antibody (C-term) is for research use only and not for use in diagnostic or therapeutic procedures.

Protein Information

Name	DUS1L (HGNC:30086)
Function	Catalyzes the synthesis of dihydrouridine, a modified base found in the D-loop of most tRNAs (PubMed: 34798057 , PubMed: 39354220). Specifically modifies U16 and U17 in cytoplasmic tRNAs (PubMed: 39354220). Affects the

level of some mature tRNA and thereby the total cellular translation (PubMed:[39354220](#)).

Cellular Location

Cytoplasm. Nucleus. Note=Predominantly cytoplasmic localization with a minor population localized to the nucleus

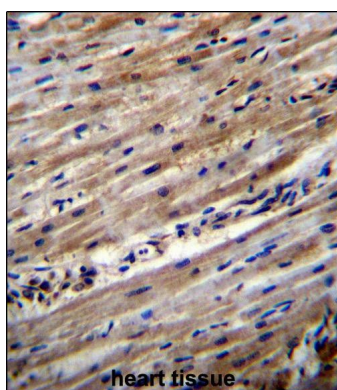
Background

DUS1L catalyzes the synthesis of dihydrouridine, a modified base found in the D-loop of most tRNAs (By similarity).

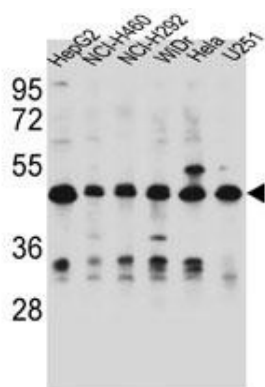
References

Gerhard, D.S., et al. Genome Res. 14 (10B), 2121-2127 (2004) :

Images



DUS1L Antibody (C-term) (Cat. #AP12520b) immunohistochemistry analysis in formalin fixed and paraffin embedded human heart tissue followed by peroxidase conjugation of the secondary antibody and DAB staining. This data demonstrates the use of DUS1L Antibody (C-term) for immunohistochemistry. Clinical relevance has not been evaluated.



DUS1L Antibody (C-term) (Cat. #AP12520b) western blot analysis in HepG2, NCI-H460, NCI-H292, WiDr, HeLa, U251 cell line lysates (35ug/lane). This demonstrates the DUS1L antibody detected the DUS1L protein (arrow).

Please note: All products are 'FOR RESEARCH USE ONLY. NOT FOR USE IN DIAGNOSTIC OR THERAPEUTIC PROCEDURES'.