

SH3D20 Antibody (Center)

Affinity Purified Rabbit Polyclonal Antibody (Pab)

Catalog # AP12523c

Product Information

Application	WB, E
Primary Accession	Q6ZUM4
Other Accession	NP_001152802.1
Reactivity	Human
Host	Rabbit
Clonality	Polyclonal
Isotype	Rabbit IgG
Clone Names	RB31509
Calculated MW	98396
Antigen Region	198-226

Additional Information

Gene ID	201176
Other Names	Rho GTPase-activating protein 27, CIN85-associated multi-domain-containing Rho GTPase-activating protein 1, Rho-type GTPase-activating protein 27, SH3 domain-containing protein 20, ARHGAP27, CAMGAP1, SH3D20
Target/Specificity	This SH3D20 antibody is generated from rabbits immunized with a KLH conjugated synthetic peptide between 198-226 amino acids from the Central region of human SH3D20.
Dilution	WB~~1:1000 E~~Use at an assay dependent concentration.
Format	Purified polyclonal antibody supplied in PBS with 0.09% (W/V) sodium azide. This antibody is purified through a protein A column, followed by peptide affinity purification.
Storage	Maintain refrigerated at 2-8°C for up to 2 weeks. For long term storage store at -20°C in small aliquots to prevent freeze-thaw cycles.
Precautions	SH3D20 Antibody (Center) is for research use only and not for use in diagnostic or therapeutic procedures.

Protein Information

Name	ARHGAP27 (HGNC:31813)
Function	Rho GTPase-activating protein which may be involved in clathrin-mediated endocytosis. GTPase activators for the Rho-type GTPases act by converting

them to an inactive GDP-bound state. Has activity toward CDC42 and RAC1 (By similarity).

Cellular Location

Cytoplasm. Membrane; Peripheral membrane protein

Tissue Location

Expressed in germinal center B-cell, spleen, chronic lymphocytic leukemia, pancreatic cancer and lung cancer

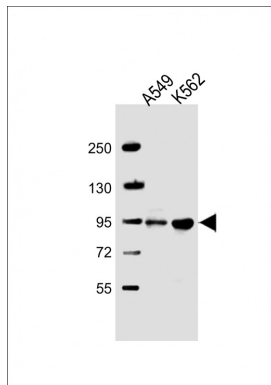
Background

SH3D20 is a rho GTPase-activating protein which may be involved in clathrin-mediated endocytosis. GTPase activators for the Rho-type GTPases act by converting them to an inactive GDP-bound state. Has activity toward CDC42 and RAC1 (By similarity).

References

Edwards, T.L., et al. Ann. Hum. Genet. 74(2):97-109(2010)

Images



All lanes : Anti-SH3D20 Antibody (Center) at 1:2000 dilution Lane 1: A549 whole cell lysate Lane 2: K562 whole cell lysate Lysates/proteins at 20 µg per lane. Secondary Goat Anti-Rabbit IgG, (H+L), Peroxidase conjugated at 1/10000 dilution. Predicted band size : 98 kDa Blocking/Dilution buffer: 5% NFDM/TBST.

Please note: All products are 'FOR RESEARCH USE ONLY. NOT FOR USE IN DIAGNOSTIC OR THERAPEUTIC PROCEDURES'.