

LRRC28 Antibody (C-term)

Affinity Purified Rabbit Polyclonal Antibody (Pab)

Catalog # AP12528b

Product Information

Application	WB, IHC-P, E
Primary Accession	Q86X40
Other Accession	Q32KX5 , NP_653199.2
Reactivity	Human, Mouse
Predicted	Bovine
Host	Rabbit
Clonality	Polyclonal
Isotype	Rabbit IgG
Clone Names	RB31532
Calculated MW	41912
Antigen Region	314-342

Additional Information

Gene ID	123355
Other Names	Leucine-rich repeat-containing protein 28, LRRC28
Target/Specificity	This LRRC28 antibody is generated from rabbits immunized with a KLH conjugated synthetic peptide between 314-342 amino acids from the C-terminal region of human LRRC28.
Dilution	WB~~1:1000 IHC-P~~1:100~500 E~~Use at an assay dependent concentration.
Format	Purified polyclonal antibody supplied in PBS with 0.09% (W/V) sodium azide. This antibody is purified through a protein A column, followed by peptide affinity purification.
Storage	Maintain refrigerated at 2-8°C for up to 2 weeks. For long term storage store at -20°C in small aliquots to prevent freeze-thaw cycles.
Precautions	LRRC28 Antibody (C-term) is for research use only and not for use in diagnostic or therapeutic procedures.

Protein Information

Name	LRRC28
-------------	--------

Background

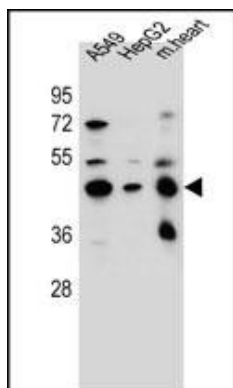
LRRC28 contains 11 LRR (leucine-rich) repeats. The function of the LRRC28 protein is not known.

References

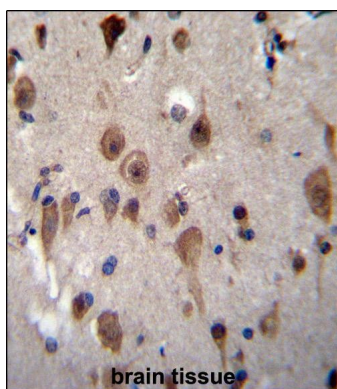
Lamesch, P., et al. Genomics 89(3):307-315(2007)

Clark, H.F., et al. Genome Res. 13(10):2265-2270(2003)

Images



LRRC28 Antibody (C-term) (Cat. #AP12528b) western blot analysis in A549, HepG2 cell line and mouse heart tissue lysates (35ug/lane). This demonstrates the LRRC28 antibody detected the LRRC28 protein (arrow).



LRRC28 Antibody (C-term) (Cat. #AP12528b) immunohistochemistry analysis in formalin fixed and paraffin embedded human brain tissue followed by peroxidase conjugation of the secondary antibody and DAB staining. This data demonstrates the use of LRRC28 Antibody (C-term) for immunohistochemistry. Clinical relevance has not been evaluated.

Please note: All products are 'FOR RESEARCH USE ONLY. NOT FOR USE IN DIAGNOSTIC OR THERAPEUTIC PROCEDURES'.