

LIPM Antibody (C-term)

Affinity Purified Rabbit Polyclonal Antibody (Pab)

Catalog # AP12530b

Product Information

Application	WB, IHC-P, E
Primary Accession	Q5VYY2
Other Accession	NP_001121687.1
Reactivity	Human
Host	Rabbit
Clonality	Polyclonal
Isotype	Rabbit IgG
Clone Names	RB31546
Calculated MW	48233
Antigen Region	318-346

Additional Information

Gene ID	340654
Other Names	Lipase member M, 311-, Lipase-like abhydrolase domain-containing protein 3, LIPM, LIPL3
Target/Specificity	This LIPM antibody is generated from rabbits immunized with a KLH conjugated synthetic peptide between 318-346 amino acids from the C-terminal region of human LIPM.
Dilution	WB~~1:1000 IHC-P~~1:100~500 E~~Use at an assay dependent concentration.
Format	Purified polyclonal antibody supplied in PBS with 0.09% (W/V) sodium azide. This antibody is purified through a protein A column, followed by peptide affinity purification.
Storage	Maintain refrigerated at 2-8°C for up to 2 weeks. For long term storage store at -20°C in small aliquots to prevent freeze-thaw cycles.
Precautions	LIPM Antibody (C-term) is for research use only and not for use in diagnostic or therapeutic procedures.

Protein Information

Name	LIPM
Synonyms	LIPL3
Function	Plays a highly specific role in the last step of keratinocyte differentiation.

May have an essential function in lipid metabolism of the most differentiated epidermal layers.

Cellular Location

Secreted.

Tissue Location

Exclusively expressed in the epidermis within the granular keratinocytes.

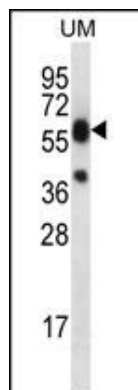
Background

LIPM plays a highly specific role in the last step of keratinocyte differentiation. May have an essential function in lipid metabolism of the most differentiated epidermal layers.

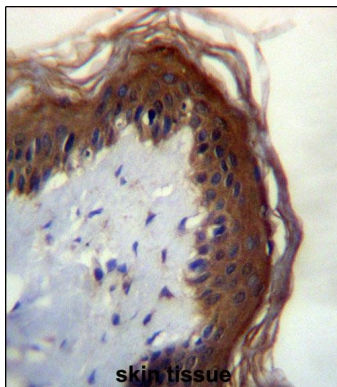
References

Toulza, E., et al. Genome Biol. 8 (6), R107 (2007) :

Images



LIPM Antibody (C-term) (Cat. #AP12530b) western blot analysis in uterus tumor cell line lysates (35ug/lane). This demonstrates the LIPM antibody detected the LIPM protein (arrow).



LIPM Antibdy (C-term) (Cat. #AP12530b) immunohistochemistry analysis in formalin fixed and paraffin embedded human skin tissue followed by peroxidase conjugation of the secondary antibody and DAB staining. This data demonstrates the use of LIPM Antibdy (C-term) for immunohistochemistry. Clinical relevance has not been evaluated.

Please note: All products are 'FOR RESEARCH USE ONLY. NOT FOR USE IN DIAGNOSTIC OR THERAPEUTIC PROCEDURES'.