

TESSP1 Antibody (Center)

Affinity Purified Rabbit Polyclonal Antibody (Pab)

Catalog # AP12531c

Product Information

Application	WB, E
Primary Accession	Q7RTY9
Other Accession	NP_001128558.1
Reactivity	Human
Host	Rabbit
Clonality	Polyclonal
Isotype	Rabbit IgG
Clone Names	RB31547
Calculated MW	35078
Antigen Region	106-133

Additional Information

Gene ID	360226
Other Names	Putative serine protease 41, 3421-, Testis serine protease 1, TESSP-1, PRSS41, TESSP1
Target/Specificity	This TESSP1 antibody is generated from rabbits immunized with a KLH conjugated synthetic peptide between 106-133 amino acids from the Central region of human TESSP1.
Dilution	WB~~1:1000 E~~Use at an assay dependent concentration.
Format	Purified polyclonal antibody supplied in PBS with 0.09% (W/V) sodium azide. This antibody is purified through a protein A column, followed by peptide affinity purification.
Storage	Maintain refrigerated at 2-8°C for up to 2 weeks. For long term storage store at -20°C in small aliquots to prevent freeze-thaw cycles.
Precautions	TESSP1 Antibody (Center) is for research use only and not for use in diagnostic or therapeutic procedures.

Protein Information

Name	PRSS41 (HGNC:30715)
Synonyms	TESSP1
Cellular Location	Cell membrane; Lipid-anchor, GPI-anchor. Note=Localized in the plasma

membrane of spermatogonia. Localized in intracellular compartment in spermatocytes, probably in the Golgi apparatus (By similarity).

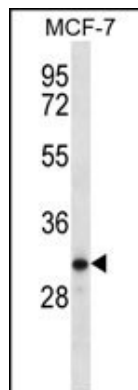
Background

The function of this protein remains unknown.

References

Puente, X.S., et al. Nat. Rev. Genet. 4(7):544-558(2003)

Images



TESSP1 Antibody (Center) (Cat. #AP12531c) western blot analysis in MCF-7 cell line lysates (35ug/lane). This demonstrates the TESSP1 antibody detected the TESSP1 protein (arrow).

Please note: All products are 'FOR RESEARCH USE ONLY. NOT FOR USE IN DIAGNOSTIC OR THERAPEUTIC PROCEDURES'.