

# DHRS4L1 Antibody (C-term)

Affinity Purified Rabbit Polyclonal Antibody (Pab)

Catalog # AP12532b

## Product Information

---

Application	WB, E
Primary Accession	<a href="#">P0CG22</a>
Other Accession	<a href="#">Q9BTZ2</a> , <a href="#">NP_001075957.1</a>
Reactivity	Human
Host	Rabbit
Clonality	Polyclonal
Isotype	Rabbit IgG
Clone Names	RB31557
Calculated MW	30608
Antigen Region	222-250

## Additional Information

---

Other Names	Putative dehydrogenase/reductase SDR family member 4-like 2, 11--, DHRS4L1
Target/Specificity	This DHRS4L1 antibody is generated from rabbits immunized with a KLH conjugated synthetic peptide between 222-250 amino acids from the C-terminal region of human DHRS4L1.
Dilution	WB~~1:1000 E~~Use at an assay dependent concentration.
Format	Purified polyclonal antibody supplied in PBS with 0.09% (W/V) sodium azide. This antibody is purified through a protein A column, followed by peptide affinity purification.
Storage	Maintain refrigerated at 2-8°C for up to 2 weeks. For long term storage store at -20°C in small aliquots to prevent freeze-thaw cycles.
Precautions	DHRS4L1 Antibody (C-term) is for research use only and not for use in diagnostic or therapeutic procedures.

## Protein Information

---

Name	DHRS4L1 ( <a href="#">HGNC:19732</a> )
Function	Putative oxidoreductase.

## Background

---

DHRS4L1 putative oxidoreductase (By similarity).

## References

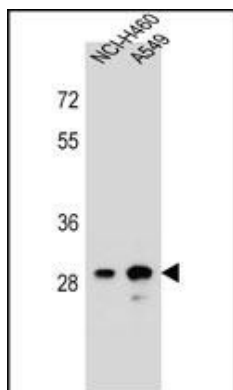
---

Heilig, R., et al. Nature 421(6923):601-607(2003)

Fransen, M., et al. Biochem. J. 340 (PT 2), 561-568 (1999) :

## Images

---



DHRS4L1 Antibody (C-term) (Cat. #AP12532b) western blot analysis in NCI-H460,A549 cell line lysates (35ug/lane).This demonstrates the DHRS4L1 antibody detected the DHRS4L1 protein (arrow).

Please note: All products are 'FOR RESEARCH USE ONLY. NOT FOR USE IN DIAGNOSTIC OR THERAPEUTIC PROCEDURES'.