

LOC401387 Antibody (C-term)

Affinity Purified Rabbit Polyclonal Antibody (Pab)

Catalog # AP12533b

Product Information

Application	WB, FC, E
Primary Accession	A4D1F6
Other Accession	Q4R6F0 , NP_001155000.1
Reactivity	Human, Rat, Mouse
Predicted	Monkey
Host	Rabbit
Clonality	Polyclonal
Isotype	Rabbit IgG
Clone Names	RB31561
Calculated MW	98035
Antigen Region	613-642

Additional Information

Gene ID	401387
Other Names	Leucine-rich repeat and death domain-containing protein 1, LRRD1
Target/Specificity	This LOC401387 antibody is generated from rabbits immunized with a KLH conjugated synthetic peptide between 613-642 amino acids from the C-terminal region of human LOC401387.
Dilution	WB~~1:1000 FC~~1:10~50 E~~Use at an assay dependent concentration.
Format	Purified polyclonal antibody supplied in PBS with 0.05% (V/V) Proclin 300. This antibody is prepared by Saturated Ammonium Sulfate (SAS) precipitation followed by dialysis against PBS.
Storage	Maintain refrigerated at 2-8°C for up to 2 weeks. For long term storage store at -20°C in small aliquots to prevent freeze-thaw cycles.
Precautions	LOC401387 Antibody (C-term) is for research use only and not for use in diagnostic or therapeutic procedures.

Protein Information

Name	LRRD1
------	-------

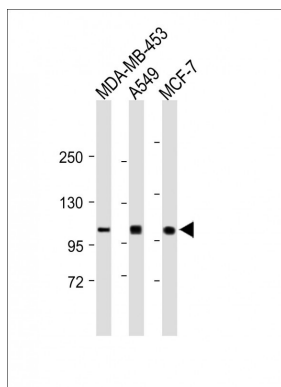
Background

The function of this protein remains unknown.

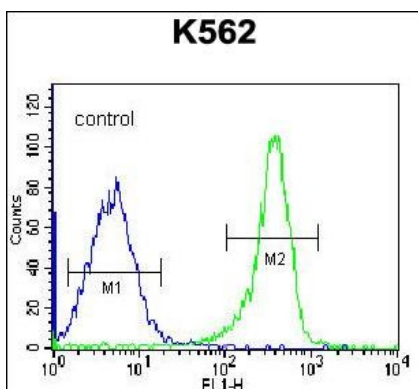
References

Strausberg, R.L., et al. Proc. Natl. Acad. Sci. U.S.A. 99(26):16899-16903(2002)

Images



All lanes : Anti-LOC401387 Antibody (C-term) at 1:1000 dilution Lane 1: MDA-MB-453 whole cell lysate Lane 2: A549 whole cell lysate Lane 3: MCF-7 whole cell lysate Lysates/proteins at 20 µg per lane. Secondary Goat Anti-Rabbit IgG, (H+L), Peroxidase conjugated (ASP1615) at 1/15000 dilution. Observed band size : 105kDa Blocking/Dilution buffer: 5% NFDM/TBST.



LOC401387 Antibody (C-term) (Cat. #AP12533b) flow cytometric analysis of K562 cells (right histogram) compared to a negative control cell (left histogram). FITC-conjugated goat-anti-rabbit secondary antibodies were used for the analysis.

Please note: All products are 'FOR RESEARCH USE ONLY. NOT FOR USE IN DIAGNOSTIC OR THERAPEUTIC PROCEDURES'.