

K1324 Antibody (C-term)

Affinity Purified Rabbit Polyclonal Antibody (Pab)

Catalog # AP12550b

Product Information

Application	WB, IHC-P, E
Primary Accession	Q6UXG2
Other Accession	NP_065826.2
Reactivity	Human, Mouse
Host	Rabbit
Clonality	Polyclonal
Isotype	Rabbit IgG
Clone Names	RB27119
Calculated MW	111382
Antigen Region	704-732

Additional Information

Gene ID	57535
Other Names	UPF0577 protein KIAA1324, Estrogen-induced gene 121 protein, KIAA1324, EIG121
Target/Specificity	This K1324 antibody is generated from rabbits immunized with a KLH conjugated synthetic peptide between 704-732 amino acids from the C-terminal region of human K1324.
Dilution	WB~~1:1000 IHC-P~~1:100~500 E~~Use at an assay dependent concentration.
Format	Purified polyclonal antibody supplied in PBS with 0.09% (W/V) sodium azide. This antibody is purified through a protein A column, followed by peptide affinity purification.
Storage	Maintain refrigerated at 2-8°C for up to 2 weeks. For long term storage store at -20°C in small aliquots to prevent freeze-thaw cycles.
Precautions	K1324 Antibody (C-term) is for research use only and not for use in diagnostic or therapeutic procedures.

Protein Information

Name	ELAPOR1 (HGNC:29618)
Function	May protect cells from cell death by inducing cytosolic vacuolization and up-regulating the autophagy pathway (PubMed: 21072319). May play a role in apoptosis and cell proliferation through its interaction with HSPA5

(PubMed:[26045166](#)).

Cellular Location	Cell membrane; Single-pass type I membrane protein. Late endosome membrane; Single-pass type I membrane protein. Golgi apparatus, trans-Golgi network membrane; Single-pass type I membrane protein. Lysosome membrane; Single-pass membrane protein. Endoplasmic reticulum membrane; Single-pass type I membrane protein
Tissue Location	Expressed in normal endometrium but overexpressed in endometroid tumors.

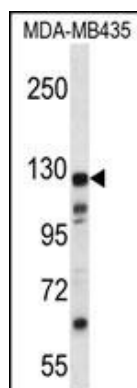
Background

K1324 may play a role as a marker of hyperestrogenic state and estrogen-related type I endometrial carcinoma.

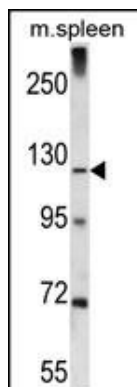
References

Rose, J.E., et al. Mol. Med. 16 (7-8), 247-253 (2010) :
Araki, T., et al. Gene Expr. Patterns 7(6):666-671(2007)
Wang, A.G., et al. Biochem. Biophys. Res. Commun. 345(3):1022-1032(2006)
Deng, L., et al. Clin. Cancer Res. 11(23):8258-8264(2005)
Clark, H.F., et al. Genome Res. 13(10):2265-2270(2003)

Images

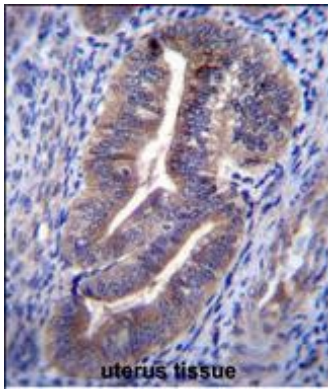


K1324 Antibody (C-term) (Cat. #AP12550b) western blot analysis in MDA-MB435 cell line lysates (35ug/lane). This demonstrates the K1324 antibody detected the K1324 protein (arrow).



K1324 Antibody (C-term) (Cat. #AP12550b) western blot analysis in mouse spleen tissue lysates (35ug/lane). This demonstrates the K1324 antibody detected the K1324 protein (arrow).

K1324 Antibody (C-term) (Cat. #AP12550b) immunohistochemistry analysis in formalin fixed and paraffin embedded human uterus tissue followed by peroxidase conjugation of the secondary antibody and DAB staining. This data demonstrates the



use of K1324 Antibody (C-term) for immunohistochemistry. Clinical relevance has not been evaluated.

Please note: All products are 'FOR RESEARCH USE ONLY. NOT FOR USE IN DIAGNOSTIC OR THERAPEUTIC PROCEDURES'.