

PREX1 Antibody (C-term)

Affinity Purified Rabbit Polyclonal Antibody (Pab)

Catalog # AP12575b

Product Information

| | |
|--------------------------|-----------------------------|
| Application | WB, IHC-P, FC, E |
| Primary Accession | Q8TCU6 |
| Other Accession | NP_065871.2 |
| Reactivity | Human |
| Host | Rabbit |
| Clonality | Polyclonal |
| Isotype | Rabbit IgG |
| Clone Names | RB31307 |
| Calculated MW | 186203 |
| Antigen Region | 1134-1163 |

Additional Information

| | |
|---------------------------|---|
| Gene ID | 57580 |
| Other Names | Phosphatidylinositol 3, 5-trisphosphate-dependent Rac exchanger 1 protein, P-Rex1, PtdIns(3, 5)-dependent Rac exchanger 1, PREX1, KIAA1415 |
| Target/Specificity | This PREX1 antibody is generated from rabbits immunized with a KLH conjugated synthetic peptide between 1134-1163 amino acids from the C-terminal region of human PREX1. |
| Dilution | WB~~1:1000 IHC-P~~1:100~500 FC~~1:10~50 E~~Use at an assay dependent concentration. |
| Format | Purified polyclonal antibody supplied in PBS with 0.05% (V/V) Proclin 300. This antibody is purified through a protein A column, followed by peptide affinity purification. |
| Storage | Maintain refrigerated at 2-8°C for up to 2 weeks. For long term storage store at -20°C in small aliquots to prevent freeze-thaw cycles. |
| Precautions | PREX1 Antibody (C-term) is for research use only and not for use in diagnostic or therapeutic procedures. |

Protein Information

| | |
|-----------------|----------|
| Name | PREX1 |
| Synonyms | KIAA1415 |

| | |
|--------------------------|---|
| Function | Functions as a RAC guanine nucleotide exchange factor (GEF), which activates the Rac proteins by exchanging bound GDP for free GTP. Its activity is synergistically activated by phosphatidylinositol 3,4,5-trisphosphate and the beta gamma subunits of heterotrimeric G protein. May function downstream of heterotrimeric G proteins in neutrophils. |
| Cellular Location | Cytoplasm, cytosol. Cell membrane. Note=Mainly cytosolic. Some amount is apparently associated to the plasma membrane |
| Tissue Location | Mainly expressed in peripheral blood leukocytes and brain. Expressed at intermediate level in spleen and lymph nodes, and weakly expressed in other tissues |

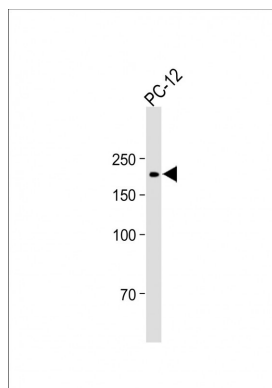
Background

The protein encoded by this gene acts as a guanine nucleotide exchange factor for the RHO family of small GTP-binding proteins (RACs). It has been shown to bind to and activate RAC1 by exchanging bound GDP for free GTP. The encoded protein, which is found mainly in the cytoplasm, is activated by phosphatidylinositol-3,4,5-trisphosphate and the beta-gamma subunits of heterotrimeric G proteins.

References

Lewis, J.P., et al. Genomics 96(4):211-219(2010)
 Rose, J.E., et al. Mol. Med. 16 (7-8), 247-253 (2010) :
 Nie, B., et al. Cell. Signal. 22(5):770-782(2010)
 Carretero-Ortega, J., et al. Mol. Pharmacol. 77(3):435-442(2010)
 Ledezma-Sanchez, B.A., et al. Biochem. Biophys. Res. Commun. 391(4):1647-1652(2010)

Images



All lanes: Anti-PREX1 Antibody (C-term) at 1:2000 dilution + PC-12 whole cell lysate Lysates/proteins at 20 µg per lane. Secondary: Goat Anti-Rabbit IgG, (H+L), Peroxidase conjugated (ASP1615) at 1/15000 dilution. Observed band size: 186 KDa Blocking/Dilution buffer: 5% NFDm/TBST.

Please note: All products are 'FOR RESEARCH USE ONLY. NOT FOR USE IN DIAGNOSTIC OR THERAPEUTIC PROCEDURES'.