

FBX41 Antibody (N-term)

Affinity Purified Rabbit Polyclonal Antibody (Pab)

Catalog # AP12585a

Product Information

Application	WB, E
Primary Accession	Q8TF61
Other Accession	Q6NS60 , NP_001073879.2
Reactivity	Mouse
Host	Rabbit
Clonality	Polyclonal
Isotype	Rabbit IgG
Clone Names	RB31473
Calculated MW	94496
Antigen Region	235-263

Additional Information

Gene ID	150726
Other Names	F-box only protein 41, FBXO41, FBX41, KIAA1940
Target/Specificity	This FBX41 antibody is generated from rabbits immunized with a KLH conjugated synthetic peptide between 235-263 amino acids from the N-terminal region of human FBX41.
Dilution	WB~~1:1000 E~~Use at an assay dependent concentration.
Format	Purified polyclonal antibody supplied in PBS with 0.09% (W/V) sodium azide. This antibody is purified through a protein A column, followed by peptide affinity purification.
Storage	Maintain refrigerated at 2-8°C for up to 2 weeks. For long term storage store at -20°C in small aliquots to prevent freeze-thaw cycles.
Precautions	FBX41 Antibody (N-term) is for research use only and not for use in diagnostic or therapeutic procedures.

Protein Information

Name	FBXO41
Synonyms	FBX41, KIAA1940
Function	Substrate-recognition component of the SCF (SKP1-CUL1-F-box protein)-type E3 ubiquitin ligase complex.

Background

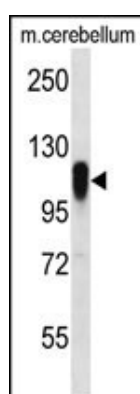
Members of the F-box protein family, such as FBXO41, are characterized by an approximately 40-amino acid F-box motif. SCF complexes, formed by SKP1 (MIM 601434), cullin (see CUL1; MIM 603134), and F-box proteins, act as protein-ubiquitin ligases. F-box proteins interact with SKP1 through the F box, and they interact with ubiquitination targets through other protein interaction domains (Jin et al., 2004 [PubMed 15520277]).[supplied by OMIM].

References

Jin, J., et al. Genes Dev. 18(21):2573-2580(2004)

Watanabe, N., et al. Proc. Natl. Acad. Sci. U.S.A. 101(13):4419-4424(2004)

Images



FBX41 Antibody (N-term) (Cat. #AP12585a) western blot analysis in mouse cerebellum tissue lysates (35ug/lane). This demonstrates the FBX41 antibody detected the FBX41 protein (arrow).

Please note: All products are 'FOR RESEARCH USE ONLY. NOT FOR USE IN DIAGNOSTIC OR THERAPEUTIC PROCEDURES'.