

BEND6 Antibody (C-term)

Affinity Purified Rabbit Polyclonal Antibody (Pab)

Catalog # AP12587b

Product Information

Application	WB, IHC-P, E
Primary Accession	Q5SZJ8
Other Accession	NP_689944.2
Reactivity	Human
Host	Rabbit
Clonality	Polyclonal
Isotype	Rabbit IgG
Clone Names	RB31491
Calculated MW	31222
Antigen Region	226-254

Additional Information

Gene ID	221336
Other Names	BEN domain-containing protein 6, BEND6, C6orf65
Target/Specificity	This BEND6 antibody is generated from rabbits immunized with a KLH conjugated synthetic peptide between 226-254 amino acids from the C-terminal region of human BEND6.
Dilution	WB~~1:1000 IHC-P~~1:100~500 E~~Use at an assay dependent concentration.
Format	Purified polyclonal antibody supplied in PBS with 0.09% (W/V) sodium azide. This antibody is purified through a protein A column, followed by peptide affinity purification.
Storage	Maintain refrigerated at 2-8°C for up to 2 weeks. For long term storage store at -20°C in small aliquots to prevent freeze-thaw cycles.
Precautions	BEND6 Antibody (C-term) is for research use only and not for use in diagnostic or therapeutic procedures.

Protein Information

Name	BEND6
Synonyms	C6orf65
Function	Acts as a corepressor of recombining binding protein suppressor hairless (RBPJ) and inhibits Notch signaling in neural stem cells, thereby opposing

their self-renewal and promoting neurogenesis (PubMed:[23571214](#)).

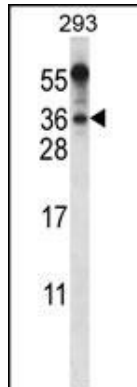
Cellular Location

Nucleus {ECO:0000250|UniProtKB:Q6PFX2}.

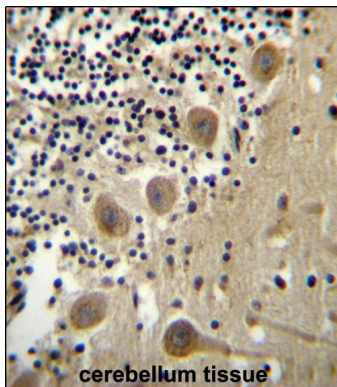
Background

The exact functions of this protein remain unknown.

Images



BEND6 Antibody (C-term) (Cat. #AP12587b) western blot analysis in 293 cell line lysates (35ug/lane). This demonstrates the BEND6 antibody detected the BEND6 protein (arrow).



BEND6 Antibody (C-term) (Cat. #AP12587b) immunohistochemistry analysis in formalin fixed and paraffin embedded human cerebellum tissue followed by peroxidase conjugation of the secondary antibody and DAB staining. This data demonstrates the use of BEND6 Antibody (C-term) for immunohistochemistry. Clinical relevance has not been evaluated.

Please note: All products are 'FOR RESEARCH USE ONLY. NOT FOR USE IN DIAGNOSTIC OR THERAPEUTIC PROCEDURES'.