

UBE2NL Antibody (N-term)

Affinity Purified Rabbit Polyclonal Antibody (Pab)

Catalog # AP12596a

Product Information

Application	WB, IHC-P, E
Primary Accession	Q5JXB2
Other Accession	Q9EQX9 , P61089 , Q4R4I1 , P61088 , Q0P5K3 , NP_001013007.1
Reactivity	Human
Predicted	Bovine, Monkey, Mouse, Rat
Host	Rabbit
Clonality	Polyclonal
Isotype	Rabbit IgG
Clone Names	RB31548
Calculated MW	17377
Antigen Region	6-34

Additional Information

Gene ID	389898
Other Names	Putative ubiquitin-conjugating enzyme E2 N-like, Epididymis tissue protein Li 174, UBE2NL
Target/Specificity	This UBE2NL antibody is generated from rabbits immunized with a KLH conjugated synthetic peptide between 6-34 amino acids from the N-terminal region of human UBE2NL.
Dilution	WB~~1:1000 IHC-P~~1:100~500 E~~Use at an assay dependent concentration.
Format	Purified polyclonal antibody supplied in PBS with 0.09% (W/V) sodium azide. This antibody is purified through a protein A column, followed by peptide affinity purification.
Storage	Maintain refrigerated at 2-8°C for up to 2 weeks. For long term storage store at -20°C in small aliquots to prevent freeze-thaw cycles.
Precautions	UBE2NL Antibody (N-term) is for research use only and not for use in diagnostic or therapeutic procedures.

Protein Information

Name	UBE2NL
Tissue Location	Expressed in epididymis (at protein level).

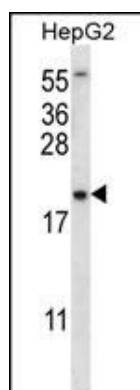
Background

This gene is intronless and encodes a member of the ubiquitin-conjugating enzyme family. The protein product is 91% identical to ubiquitin-conjugating enzyme E2N, a multi-exon gene product.

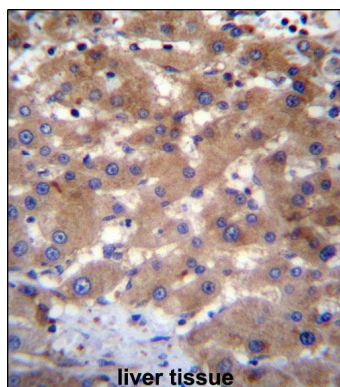
References

Ross, M.T., et al. Nature 434(7031):325-337(2005)

Images



UBE2NL Antibody (N-term) (Cat. #AP12596a) western blot analysis in HepG2 cell line lysates (35ug/lane). This demonstrates the UBE2NL antibody detected the UBE2NL protein (arrow).



UBE2NL Antibody (N-term) (Cat. #AP12596a) immunohistochemistry analysis in formalin fixed and paraffin embedded human liver tissue followed by peroxidase conjugation of the secondary antibody and DAB staining. This data demonstrates the use of UBE2NL Antibody (N-term) for immunohistochemistry. Clinical relevance has not been evaluated.

Please note: All products are 'FOR RESEARCH USE ONLY. NOT FOR USE IN DIAGNOSTIC OR THERAPEUTIC PROCEDURES'.