

LIX1L Antibody (Center)

Affinity Purified Rabbit Polyclonal Antibody (Pab)

Catalog # AP12600c

Product Information

Application	WB, E
Primary Accession	Q8IVB5
Other Accession	Q5PQQ7 , Q8BQ89 , NP_714924.1
Reactivity	Human, Rat, Mouse
Predicted	Rat
Host	Rabbit
Clonality	Polyclonal
Isotype	Rabbit IgG
Clone Names	RB32034
Calculated MW	36563
Antigen Region	160-189

Additional Information

Gene ID	128077
Other Names	LIX1-like protein, LIX1L
Target/Specificity	This LIX1L antibody is generated from rabbits immunized with a KLH conjugated synthetic peptide between 160-189 amino acids from the Central region of human LIX1L.
Dilution	WB~~1:1000 E~~Use at an assay dependent concentration.
Format	Purified polyclonal antibody supplied in PBS with 0.09% (W/V) sodium azide. This antibody is purified through a protein A column, followed by peptide affinity purification.
Storage	Maintain refrigerated at 2-8°C for up to 2 weeks. For long term storage store at -20°C in small aliquots to prevent freeze-thaw cycles.
Precautions	LIX1L Antibody (Center) is for research use only and not for use in diagnostic or therapeutic procedures.

Protein Information

Name	LIX1L
------	-------

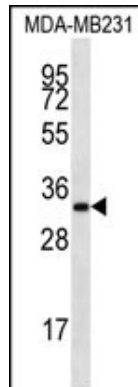
Background

The exact functions of LIX1L remain unknown.

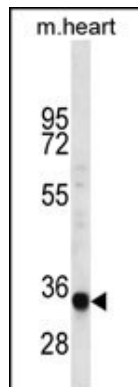
References

Gerhard, D.S., et al. Genome Res. 14 (10B), 2121-2127 (2004) :

Images



LIX1L Antibody (Center) (Cat. #AP12600c) western blot analysis in MDA-MB231 cell line lysates (35ug/lane). This demonstrates the LIX1L antibody detected the LIX1L protein (arrow).



LIX1L Antibody (Center) (Cat. #AP12600c) western blot analysis in mouse heart tissue lysates (35ug/lane). This demonstrates the LIX1L antibody detected the LIX1L protein (arrow).

Please note: All products are 'FOR RESEARCH USE ONLY. NOT FOR USE IN DIAGNOSTIC OR THERAPEUTIC PROCEDURES'.