

# SERPINE2 Antibody (Center)

Affinity Purified Rabbit Polyclonal Antibody (Pab)

Catalog # AP12607c

## Product Information

---

<b>Application</b>	WB, IHC-P, E
<b>Primary Accession</b>	<a href="#">P07093</a>
<b>Other Accession</b>	<a href="#">NP_006207.1</a>
<b>Reactivity</b>	Human
<b>Host</b>	Rabbit
<b>Clonality</b>	Polyclonal
<b>Isotype</b>	Rabbit IgG
<b>Clone Names</b>	RB32054
<b>Calculated MW</b>	44002
<b>Antigen Region</b>	106-135

## Additional Information

---

<b>Gene ID</b>	5270
<b>Other Names</b>	Glia-derived nexin, GDN, Peptidase inhibitor 7, PI-7, Protease nexin 1, PN-1, Protease nexin I, Serpin E2, SERPINE2, PI7, PN1
<b>Target/Specificity</b>	This SERPINE2 antibody is generated from rabbits immunized with a KLH conjugated synthetic peptide between 106-135 amino acids from the Central region of human SERPINE2.
<b>Dilution</b>	WB~~1:1000 IHC-P~~1:100~500 E~~Use at an assay dependent concentration.
<b>Format</b>	Purified polyclonal antibody supplied in PBS with 0.09% (W/V) sodium azide. This antibody is purified through a protein A column, followed by peptide affinity purification.
<b>Storage</b>	Maintain refrigerated at 2-8°C for up to 2 weeks. For long term storage store at -20°C in small aliquots to prevent freeze-thaw cycles.
<b>Precautions</b>	SERPINE2 Antibody (Center) is for research use only and not for use in diagnostic or therapeutic procedures.

## Protein Information

---

<b>Name</b>	SERPINE2
<b>Synonyms</b>	PI7, PN1
<b>Function</b>	Serine protease inhibitor with activity toward thrombin, trypsin, and

urokinase. Promotes neurite extension by inhibiting thrombin. Binds heparin.

#### Cellular Location

Secreted, extracellular space.

## Background

---

SERPINE2 is a serine protease inhibitor with activity toward thrombin, trypsin, and urokinase. Promotes neurite extension by inhibiting thrombin. Binds heparin.

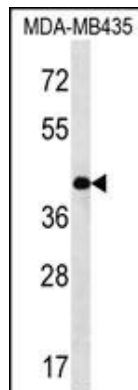
## References

---

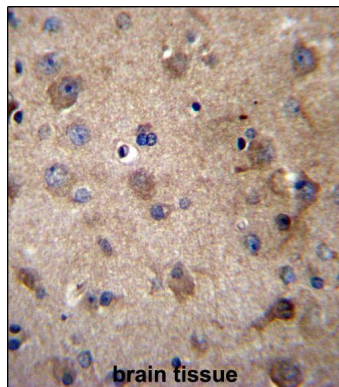
Bianchini, G., et al. J. Clin. Oncol. 28(28):4316-4323(2010)  
Hersh, C.P., et al. Am. J. Respir. Crit. Care Med. 182(5):605-613(2010)  
Hultman, K., et al. J. Neurosci. Res. 88(11):2441-2449(2010)  
Kim, W.J., et al. Eur. Respir. J. (2010) In press :  
Sorheim, I.C., et al. Clin Respir J 2 SUPPL 1, 129-131 (2008) :

## Images

---



SERPINE2 Antibody (Center) (Cat. #AP12607c) western blot analysis in MDA-MB435 cell line lysates (35ug/lane). This demonstrates the SERPINE2 antibody detected the SERPINE2 protein (arrow).



SERPINE2 Antibody (Center) (Cat. #AP12607c) immunohistochemistry analysis in formalin fixed and paraffin embedded human brain tissue followed by peroxidase conjugation of the secondary antibody and DAB staining. This data demonstrates the use of SERPINE2 Antibody (Center) for immunohistochemistry. Clinical relevance has not been evaluated.

Please note: All products are 'FOR RESEARCH USE ONLY. NOT FOR USE IN DIAGNOSTIC OR THERAPEUTIC PROCEDURES'.