

MLPH Antibody (C-term)

Affinity Purified Rabbit Polyclonal Antibody (Pab)

Catalog # AP12611B

Product Information

Application	WB, IHC-P, E
Primary Accession	Q9BV36
Other Accession	NP_077006.1
Reactivity	Human
Host	Rabbit
Clonality	Polyclonal
Isotype	Rabbit IgG
Clone Names	RB32075
Calculated MW	65949
Antigen Region	541-569

Additional Information

Gene ID	79083
Other Names	Melanophilin, Exophilin-3, Slp homolog lacking C2 domains a, SlaC2-a, Synaptotagmin-like protein 2a, MLPH, SLAC2A
Target/Specificity	This MLPH antibody is generated from rabbits immunized with a KLH conjugated synthetic peptide between 541-569 amino acids from the C-terminal region of human MLPH.
Dilution	WB~~1:1000 IHC-P~~1:100~500 E~~Use at an assay dependent concentration.
Format	Purified polyclonal antibody supplied in PBS with 0.05% (V/V) Proclin 300. This antibody is prepared by Saturated Ammonium Sulfate (SAS) precipitation followed by dialysis against PBS.
Storage	Maintain refrigerated at 2-8°C for up to 2 weeks. For long term storage store at -20°C in small aliquots to prevent freeze-thaw cycles.
Precautions	MLPH Antibody (C-term) is for research use only and not for use in diagnostic or therapeutic procedures.

Protein Information

Name	MLPH
Synonyms	SLAC2A
Function	Rab effector protein involved in melanosome transport. Serves as link

between melanosome-bound RAB27A and the motor protein MYO5A.

Cellular Location

Cytoplasm.

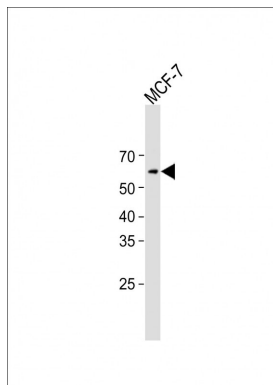
Background

This gene encodes a member of the exophilin subfamily of Rab effector proteins. The protein forms a ternary complex with the small Ras-related GTPase Rab27A in its GTP-bound form and the motor protein myosin Va. A similar protein complex in mouse functions to tether pigment-producing organelles called melanosomes to the actin cytoskeleton in melanocytes, and is required for visible pigmentation in the hair and skin. A mutation in this gene results in Griscelli syndrome type 3, which is characterized by a silver-gray hair color and abnormal pigment distribution in the hair shaft. Several alternatively spliced transcript variants of this gene have been described, but the full-length nature of some of these variants has not been determined.

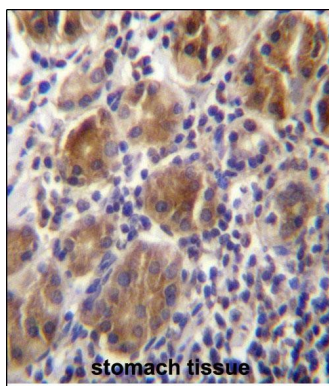
References

Park, J.W., et al. J. Med. Genet. 43(7):598-608(2006)
Seabra, M.C., et al. Traffic 5(6):393-399(2004)
Fukuda, M., et al. J. Cell. Sci. 117 (PT 4), 583-591 (2004) :
Lukusa, T., et al. Genet. Couns. 15(3):293-301(2004)
Menasche, G., et al. J. Clin. Invest. 112(3):450-456(2003)

Images



All lanes: Anti-MLPH Antibody (C-term) at 1:1000 dilution
Lane 1: MCF-7 whole cell lysate Lysates/proteins at 20 µg per lane. Secondary: Goat Anti-Rabbit IgG, (H+L), Peroxidase conjugated (ASP1615) at 1/15000 dilution. Observed band size: 66KDa Blocking/Dilution buffer: 5% NFDM/TBST.



MLPH Antibdy (C-term) (Cat. #AP12611b)immunohistochemistry analysis in formalin fixed and paraffin embedded human stomach tissue followed by peroxidase conjugation of the secondary antibody and DAB staining.This data demonstrates the use of MLPH Antibdy (C-term) for immunohistochemistry. Clinical relevance has not been evaluated.

Please note: All products are 'FOR RESEARCH USE ONLY. NOT FOR USE IN DIAGNOSTIC OR THERAPEUTIC PROCEDURES'.