

HINFP Antibody (Center)

Affinity Purified Rabbit Polyclonal Antibody (Pab)

Catalog # AP12622c

Product Information

Application	WB, E
Primary Accession	Q9BQA5
Other Accession	NP_945322.1 , NP_056332.2
Reactivity	Human, Mouse
Host	Rabbit
Clonality	Polyclonal
Isotype	Rabbit IgG
Calculated MW	59678
Antigen Region	317-346

Additional Information

Gene ID	25988
Other Names	Histone H4 transcription factor, Histone nuclear factor P, HiNF-P, MBD2-interacting zinc finger protein, Methyl-CpG-binding protein 2-interacting zinc finger protein, HINFP, MIZF, ZNF743
Target/Specificity	This HINFP antibody is generated from rabbits immunized with a KLH conjugated synthetic peptide between 317-346 amino acids from the Central region of human HINFP.
Dilution	WB~~1:1000 E~~Use at an assay dependent concentration.
Format	Purified polyclonal antibody supplied in PBS with 0.09% (W/V) sodium azide. This antibody is purified through a protein A column, followed by peptide affinity purification.
Storage	Maintain refrigerated at 2-8°C for up to 2 weeks. For long term storage store at -20°C in small aliquots to prevent freeze-thaw cycles.
Precautions	HINFP Antibody (Center) is for research use only and not for use in diagnostic or therapeutic procedures.

Protein Information

Name	HINFP
Synonyms	MIZF, ZNF743
Function	Transcriptional repressor that binds to the consensus sequence

5'-CGGACGTT-3' and to the RB1 promoter. Transcriptional activator that promotes histone H4 gene transcription at the G1/S phase transition in conjunction with NPAT. Also activates transcription of the ATM and PRKDC genes. Autoregulates its expression by associating with its own promoter.

Cellular Location

Nucleus. Note=Associated with discrete nuclear foci

Tissue Location

Ubiquitous. Highly expressed in brain, heart, skeletal muscle, spleen, kidney, small intestine, placenta and liver

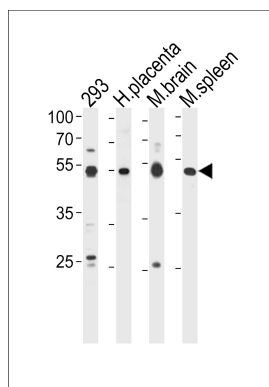
Background

MIZF interacts with methyl-CpG-binding protein-2 (MBD2; MIM 603547), a component of the MeCP1 histone deacetylase (HDAC) complex, and plays a role in DNA methylation and transcription repression.

References

Bailey, S.D., et al. Diabetes Care 33(10):2250-2253(2010)
Talmud, P.J., et al. Am. J. Hum. Genet. 85(5):628-642(2009)
Mitra, P., et al. J. Cell. Physiol. 219(2):438-448(2009)
Medina, R., et al. Biochemistry 47(44):11415-11423(2008)
Medina, R., et al. Cancer Res. 67(21):10334-10342(2007)

Images



HINFP Antibody (Center) (Cat. #AP12622c) western blot analysis in 293 cell line, human placenta, mouse brain and spleen tissue lysates (35ug/lane). This demonstrates the HINFP antibody detected the HINFP protein (arrow).

Please note: All products are 'FOR RESEARCH USE ONLY. NOT FOR USE IN DIAGNOSTIC OR THERAPEUTIC PROCEDURES'.