

CLEC3B Antibody (Center)

Purified Rabbit Polyclonal Antibody (Pab)

Catalog # AP12640c

Product Information

Application	WB, IHC-P, FC, E
Primary Accession	P05452
Other Accession	Q2KIS7 , NP_003269.2
Reactivity	Human
Predicted	Bovine
Host	Rabbit
Clonality	Polyclonal
Isotype	Rabbit IgG
Clone Names	RB17816
Calculated MW	22537
Antigen Region	95-122

Additional Information

Gene ID	7123
Other Names	Tetranectin, TN, C-type lectin domain family 3 member B, Plasminogen kringle 4-binding protein, CLEC3B, TNA
Target/Specificity	This CLEC3B antibody is generated from rabbits immunized with a KLH conjugated synthetic peptide between 95-122 amino acids from the Central region of human CLEC3B.
Dilution	WB~~1:1000 IHC-P~~1:100~500 FC~~1:10~50 E~~Use at an assay dependent concentration.
Format	Purified polyclonal antibody supplied in PBS with 0.09% (W/V) sodium azide. This antibody is prepared by Saturated Ammonium Sulfate (SAS) precipitation followed by dialysis against PBS.
Storage	Maintain refrigerated at 2-8°C for up to 2 weeks. For long term storage store at -20°C in small aliquots to prevent freeze-thaw cycles.
Precautions	CLEC3B Antibody (Center) is for research use only and not for use in diagnostic or therapeutic procedures.

Protein Information

Name	CLEC3B
Synonyms	TNA

Function	Tetranectin binds to plasminogen and to isolated kringle 4. May be involved in the packaging of molecules destined for exocytosis. Plays a role in retinal function (PubMed: 35331648).
Cellular Location	Secreted.
Tissue Location	Found in plasma.

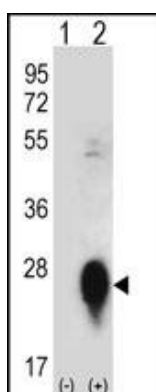
Background

Tetranectin binds to plasminogen and to isolated kringle 4. It may be involved in the packaging of molecules destined for exocytosis.

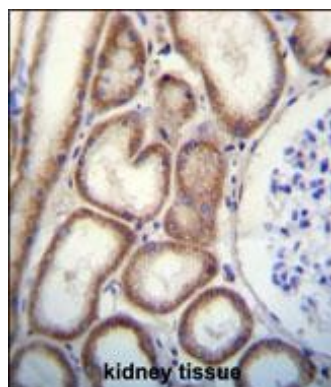
References

Ewing, R.M., et al. Mol. Syst. Biol. 3, 89 (2007) :
 Valdes, A.M., et al. Arthritis Rheum. 54(2):533-539(2006)
 Hermann, M., et al. Transplant. Proc. 37(2):1322-1325(2005)
 Anderson, N.L., et al. Mol. Cell Proteomics 3(4):311-326(2004)
 Westergaard, U.B., et al. Eur. J. Biochem. 270(8):1850-1854(2003)

Images

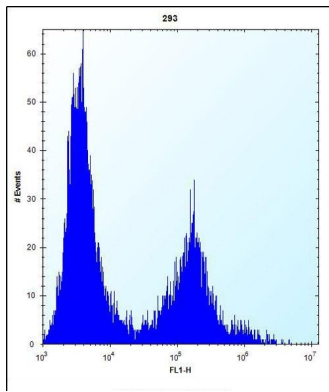


Western blot analysis of CLEC3B (arrow) using rabbit polyclonal CLEC3B Antibody (Center) (Cat. #AP12640c). 293 cell lysates (2 ug/lane) either nontransfected (Lane 1) or transiently transfected (Lane 2) with the CLEC3B gene.



CLEC3B Antibody (Center) (Cat. #AP12640c) immunohistochemistry analysis in formalin fixed and paraffin embedded human kidney tissue followed by peroxidase conjugation of the secondary antibody and DAB staining. This data demonstrates the use of CLEC3B Antibody (Center) for immunohistochemistry. Clinical relevance has not been evaluated.

CLEC3B Antibody (Center) (Cat. #AP12640c) flow cytometric analysis of 293 cells (right histogram) compared to a negative control cell (left histogram). FITC-conjugated goat-anti-rabbit secondary antibodies were used for the analysis.



Citations

- [Proteomic analysis of the effect of extracellular calcium ions on human mesenchymal stem cells: implications for bone tissue engineering.](#)

Please note: All products are 'FOR RESEARCH USE ONLY. NOT FOR USE IN DIAGNOSTIC OR THERAPEUTIC PROCEDURES'.