

# ANGPTL7 Antibody (C-term)

Purified Rabbit Polyclonal Antibody (Pab)

Catalog # AP12644b

## Product Information

---

<b>Application</b>	WB, IHC-P, FC, E
<b>Primary Accession</b>	<a href="#">O43827</a>
<b>Other Accession</b>	<a href="#">NP_066969.1</a>
<b>Reactivity</b>	Human
<b>Host</b>	Rabbit
<b>Clonality</b>	Polyclonal
<b>Isotype</b>	Rabbit IgG
<b>Clone Names</b>	RB18345
<b>Calculated MW</b>	40018
<b>Antigen Region</b>	315-346

## Additional Information

---

<b>Gene ID</b>	10218
<b>Other Names</b>	Angiopoietin-related protein 7, Angiopoietin-like factor, Angiopoietin-like protein 7, Cornea-derived transcript 6 protein, ANGPTL7, CDT6
<b>Target/Specificity</b>	This ANGPTL7 antibody is generated from rabbits immunized with a KLH conjugated synthetic peptide between 315-346 amino acids from the C-terminal region of human ANGPTL7.
<b>Dilution</b>	WB~~1:1000 IHC-P~~1:100~500 FC~~1:10~50 E~~Use at an assay dependent concentration.
<b>Format</b>	Purified polyclonal antibody supplied in PBS with 0.09% (W/V) sodium azide. This antibody is prepared by Saturated Ammonium Sulfate (SAS) precipitation followed by dialysis against PBS.
<b>Storage</b>	Maintain refrigerated at 2-8°C for up to 2 weeks. For long term storage store at -20°C in small aliquots to prevent freeze-thaw cycles.
<b>Precautions</b>	ANGPTL7 Antibody (C-term) is for research use only and not for use in diagnostic or therapeutic procedures.

## Protein Information

---

<b>Name</b>	ANGPTL7
<b>Synonyms</b>	CDT6

<b>Function</b>	Has a role in the formation and organization of the extracellular matrix. In the eye, it functions as a mediator of dexamethasone-induced matrix deposition in the trabecular meshwork, the tissue responsible for the outflow of the ocular aqueous humor and for the maintenance of intraocular pressure (PubMed: <a href="#">21199193</a> ). Is a negative regulator of angiogenesis in the cornea, and plays a major role in maintaining corneal avascularity and transparency (PubMed: <a href="#">25622036</a> ).
<b>Cellular Location</b>	Secreted.
<b>Tissue Location</b>	Highly expressed in the cornea (at protein level) (PubMed:11682471). Expression is restricted to the stromal layer (PubMed:11682471). Also detected at the junction between the corneal stromal layer and the conjunctiva. Not detected in the sclera (PubMed:11682471).

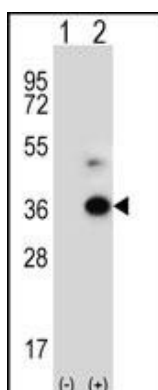
## Background

The function of this protein remains unknown.

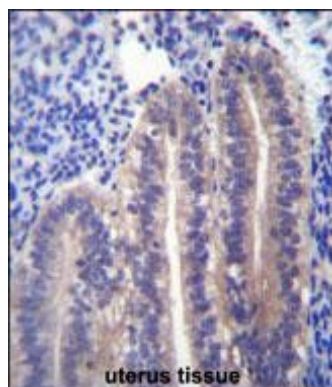
## References

Kuchtey, J., et al. Invest. Ophthalmol. Vis. Sci. 49(8):3438-3448(2008)  
Zhang, Z., et al. Protein Sci. 13(10):2819-2824(2004)  
Clark, H.F., et al. Genome Res. 13(10):2265-2270(2003)  
Peek, R., et al. J. Biol. Chem. 277(1):686-693(2002)  
Stover, C., et al. Genes Immun. 2(3):119-127(2001)

## Images

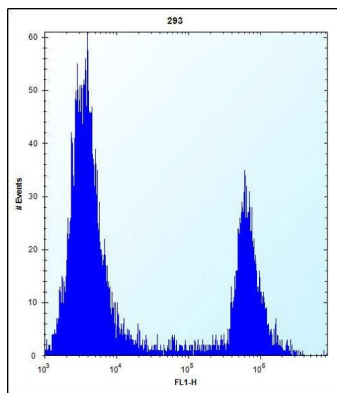


Western blot analysis of ANGPTL7 (arrow) using rabbit polyclonal ANGPTL7 Antibody (C-term) (Cat. #AP12644b). 293 cell lysates (2 ug/lane) either nontransfected (Lane 1) or transiently transfected (Lane 2) with the ANGPTL7 gene.



ANGPTL7 Antibody (C-term) (Cat. #AP12644b) immunohistochemistry analysis in formalin fixed and paraffin embedded human uterus tissue followed by peroxidase conjugation of the secondary antibody and DAB staining. This data demonstrates the use of ANGPTL7 Antibody (C-term) for immunohistochemistry. Clinical relevance has not been evaluated.

ANGPTL7 Antibody (C-term) (Cat. #AP12644b) flow cytometric analysis of 293 cells (right histogram)



compared to a negative control cell (left histogram).FITC-conjugated goat-anti-rabbit secondary antibodies were used for the analysis.

Please note: All products are 'FOR RESEARCH USE ONLY. NOT FOR USE IN DIAGNOSTIC OR THERAPEUTIC PROCEDURES'.