

EBNA1BP2 Antibody (C-term)

Affinity Purified Rabbit Polyclonal Antibody (Pab)

Catalog # AP12662b

Product Information

Application	WB, E
Primary Accession	Q99848
Other Accession	NP_001153408.1 , NP_006815.2
Reactivity	Human
Host	Rabbit
Clonality	Polyclonal
Isotype	Rabbit IgG
Clone Names	RB31304
Calculated MW	34852
Antigen Region	271-302

Additional Information

Gene ID	10969
Other Names	Probable rRNA-processing protein EBP2, EBNA1-binding protein 2, Nucleolar protein p40, EBNA1BP2, EBP2
Target/Specificity	This EBNA1BP2 antibody is generated from rabbits immunized with a KLH conjugated synthetic peptide between 271-302 amino acids from the C-terminal region of human EBNA1BP2.
Dilution	WB~~1:1000 E~~Use at an assay dependent concentration.
Format	Purified polyclonal antibody supplied in PBS with 0.09% (W/V) sodium azide. This antibody is purified through a protein A column, followed by peptide affinity purification.
Storage	Maintain refrigerated at 2-8°C for up to 2 weeks. For long term storage store at -20°C in small aliquots to prevent freeze-thaw cycles.
Precautions	EBNA1BP2 Antibody (C-term) is for research use only and not for use in diagnostic or therapeutic procedures.

Protein Information

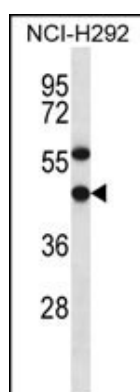
Name	EBNA1BP2
Synonyms	EBP2
Function	Required for the processing of the 27S pre-rRNA.

Cellular Location	Nucleus, nucleolus. Note=Associated with the nucleolus in an RNA-dependent manner
Tissue Location	Ubiquitous..

Background

EBNA1BP2 is required for the processing of the 27S pre-rRNA (By similarity).

Images



EBNA1BP2 Antibody (C-term) (Cat. #AP12662b) western blot analysis in NCI-H292 cell line lysates (35ug/lane). This demonstrates the EBNA1BP2 antibody detected the EBNA1BP2 protein (arrow).

Please note: All products are 'FOR RESEARCH USE ONLY. NOT FOR USE IN DIAGNOSTIC OR THERAPEUTIC PROCEDURES'.