

# MLNR Antibody (C-term)

Affinity Purified Rabbit Polyclonal Antibody (Pab)

Catalog # AP12669b

## Product Information

---

|                          |                             |
|--------------------------|-----------------------------|
| <b>Application</b>       | WB, IHC-P, E                |
| <b>Primary Accession</b> | <a href="#">O43193</a>      |
| <b>Other Accession</b>   | <a href="#">NP_001498.1</a> |
| <b>Reactivity</b>        | Human                       |
| <b>Host</b>              | Rabbit                      |
| <b>Clonality</b>         | Polyclonal                  |
| <b>Isotype</b>           | Rabbit IgG                  |
| <b>Clone Names</b>       | RB31364                     |
| <b>Calculated MW</b>     | 45344                       |
| <b>Antigen Region</b>    | 357-386                     |

## Additional Information

---

|                           |  |
|---------------------------|--|
| <b>Gene ID</b>            | 2862   |
| <b>Other Names</b>        | Motilin receptor, G-protein coupled receptor 38, MLNR, GPR38, MTLR, MTLR1  |
| <b>Target/Specificity</b> | This MLNR antibody is generated from rabbits immunized with a KLH conjugated synthetic peptide between 357-386 amino acids from the C-terminal region of human MLNR.         |
| <b>Dilution</b>           | WB~~1:1000 IHC-P~~1:100~500 E~~Use at an assay dependent concentration.  |
| <b>Format</b>             | Purified polyclonal antibody supplied in PBS with 0.09% (W/V) sodium azide. This antibody is purified through a protein A column, followed by peptide affinity purification. |
| <b>Storage</b>            | Maintain refrigerated at 2-8°C for up to 2 weeks. For long term storage store at -20°C in small aliquots to prevent freeze-thaw cycles.                                      |
| <b>Precautions</b>        | MLNR Antibody (C-term) is for research use only and not for use in diagnostic or therapeutic procedures.   |

## Protein Information

---

|                 |                       |
|-----------------|-----------------------|
| <b>Name</b>     | MLNR                  |
| <b>Synonyms</b> | GPR38, MTLR, MTLR1    |
| <b>Function</b> | Receptor for motilin. |

|                          |   |
|--------------------------|---|
| <b>Cellular Location</b> | Cell membrane; Multi-pass membrane protein.         |
| <b>Tissue Location</b>   | Expressed only in thyroid, stomach, and bone marrow |

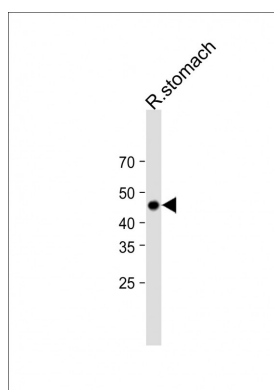
## Background

MLNR is a receptor for motilin.

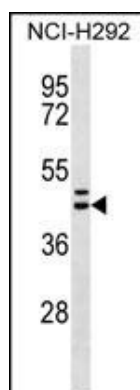
## References

Yokoyama, K., et al. Nephron Clin Pract 115 (4), C237-C243 (2010) :  
Mitselos, A., et al. Peptides 29(7):1167-1175(2008)  
Ter Beek, W.P., et al. Inflamm. Bowel Dis. 14(5):612-619(2008)  
Tokunaga, H., et al. Am. J. Physiol. Gastrointest. Liver Physiol. 294 (2), G460-G466 (2008) :  
Dowal, L., et al. J. Biol. Chem. 281(33):23999-24014(2006)

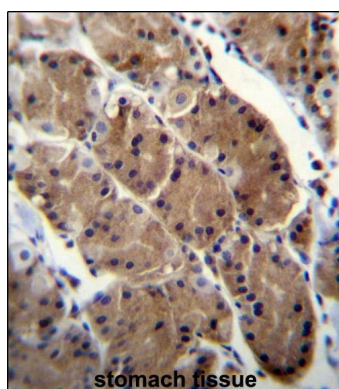
## Images



All lanes: Anti-MLNR Antibody (C-term) at 1:1000 dilution + Rat stomach lysate Lysates/proteins at 20 µg per lane. Secondary: Goat Anti-Rabbit IgG, (H+L), Peroxidase conjugated (ASP1615) at 1/15000 dilution. Observed band size: 45 KDa Blocking/Dilution buffer: 5% NFDM/TBST.



MLNR Antibody (C-term) (Cat. #AP12669b) western blot analysis in NCI-H292 cell line lysates (35ug/lane). This demonstrates the MLNR antibody detected the MLNR protein (arrow).



MLNR Antibody (C-term) (Cat. #AP12669b) immunohistochemistry analysis in formalin fixed and paraffin embedded human stomach tissue followed by peroxidase conjugation of the secondary antibody and DAB staining. This data demonstrates the use of MLNR Antibody (C-term) for immunohistochemistry. Clinical relevance has not been evaluated.

Please note: All products are 'FOR RESEARCH USE ONLY. NOT FOR USE IN DIAGNOSTIC OR THERAPEUTIC PROCEDURES'.