

ZNF562 Antibody (N-term)

Affinity Purified Rabbit Polyclonal Antibody (Pab)

Catalog # AP12672a

Product Information

Application	WB, E
Primary Accession	Q6V9R5
Other Accession	NP_001123503.1
Reactivity	Human
Host	Rabbit
Clonality	Polyclonal
Isotype	Rabbit IgG
Clone Names	RB31441
Calculated MW	48563
Antigen Region	4-33

Additional Information

Gene ID	54811
Other Names	Zinc finger protein 562, ZNF562
Target/Specificity	This ZNF562 antibody is generated from rabbits immunized with a KLH conjugated synthetic peptide between 4-33 amino acids from the N-terminal region of human ZNF562.
Dilution	WB~~1:1000 E~~Use at an assay dependent concentration.
Format	Purified polyclonal antibody supplied in PBS with 0.09% (W/V) sodium azide. This antibody is purified through a protein A column, followed by peptide affinity purification.
Storage	Maintain refrigerated at 2-8°C for up to 2 weeks. For long term storage store at -20°C in small aliquots to prevent freeze-thaw cycles.
Precautions	ZNF562 Antibody (N-term) is for research use only and not for use in diagnostic or therapeutic procedures.

Protein Information

Name	ZNF562
Function	May be involved in transcriptional regulation.
Cellular Location	Nucleus.

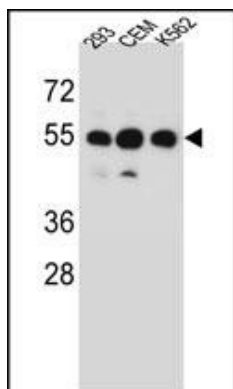
Background

ZNF562 may be involved in transcriptional regulation.

References

Rose, J.E., et al. Mol. Med. 16 (7-8), 247-253 (2010) :
Jia, L., et al. Genomics 79(1):7-17(2002)

Images



ZNF562 Antibody (N-term) (Cat. #AP12672a) western blot analysis in 293,CEM,K562 cell line lysates (35ug/lane).This demonstrates the ZNF562 antibody detected the ZNF562 protein (arrow).

Please note: All products are 'FOR RESEARCH USE ONLY. NOT FOR USE IN DIAGNOSTIC OR THERAPEUTIC PROCEDURES'.