

SLC38A8 Antibody (Center)

Affinity Purified Rabbit Polyclonal Antibody (Pab)

Catalog # AP12688c

Product Information

| | |
|-------------------|--------------------------------|
| Application | WB, E |
| Primary Accession | A6NNN8 |
| Other Accession | NP_001073911.1 |
| Reactivity | Human |
| Host | Rabbit |
| Clonality | Polyclonal |
| Isotype | Rabbit IgG |
| Clone Names | RB31554 |
| Calculated MW | 46731 |
| Antigen Region | 149-177 |

Additional Information

| | |
|--------------------|------------------------------------------------------------------------------------------------------------------------------------------------------------------------------|
| Gene ID | 146167 |
| Other Names | Putative sodium-coupled neutral amino acid transporter 8, Solute carrier family 38 member 8, SLC38A8 |
| Target/Specificity | This SLC38A8 antibody is generated from rabbits immunized with a KLH conjugated synthetic peptide between 149-177 amino acids from the Central region of human SLC38A8. |
| Dilution | WB~~1:1000 E~~Use at an assay dependent concentration. |
| Format | Purified polyclonal antibody supplied in PBS with 0.09% (W/V) sodium azide. This antibody is purified through a protein A column, followed by peptide affinity purification. |
| Storage | Maintain refrigerated at 2-8°C for up to 2 weeks. For long term storage store at -20°C in small aliquots to prevent freeze-thaw cycles. |
| Precautions | SLC38A8 Antibody (Center) is for research use only and not for use in diagnostic or therapeutic procedures. |

Protein Information

| | |
|----------|--------------------------------------------------------------------------------------------------------------------------------------------------|
| Name | SLC38A8 {ECO:0000250 UniProtKB:Q5HZH7, ECO:0000312 HGNC:HGNC:32434} |
| Function | Electrogenic sodium-dependent amino acid transporter with a preference for L-glutamine, L-alanine, L-histidine, L-aspartate and L- arginine. May |

facilitate glutamine uptake in both excitatory and inhibitory neurons. The transport mechanism and stoichiometry remain to be elucidated.

Cellular Location

Membrane {ECO:0000250|UniProtKB:Q5HZH7}; Multi- pass membrane protein. Cytoplasm, cell cortex {ECO:0000250|UniProtKB:Q5HZH7}. Cell projection, axon {ECO:0000250|UniProtKB:Q5HZH7}

Tissue Location

Expressed in fetal and adult brain, and spinal cord. In the brain, it is localized in the cell body and axon of the majority of neuronal cells and in a subset of glial cells. Found throughout the neuronal retina, with higher expression levels in the inner and outer plexiform layers and the photoreceptor layer. Very weak expression is also present in the kidneys, thymus, and testes

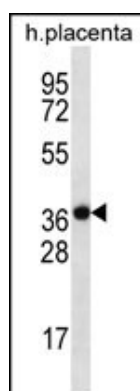
Background

SLC38A8 is a putative sodium-dependent amino acid/proton antiporter (By similarity).

References

Rose, J. Phd, et al. Mol. Med. (2010) In press :
Venter, J.C., et al. Science 291(5507):1304-1351(2001)

Images



SLC38A8 Antibody (Center) (Cat. #AP12688c) western blot analysis in human placenta tissue lysates (35ug/lane). This demonstrates the SLC38A8 antibody detected the SLC38A8 protein (arrow).

Please note: All products are 'FOR RESEARCH USE ONLY. NOT FOR USE IN DIAGNOSTIC OR THERAPEUTIC PROCEDURES'.