

KRT222P Antibody (C-term)

Affinity Purified Rabbit Polyclonal Antibody (Pab)

Catalog # AP12696b

Product Information

Application	WB, E
Primary Accession	Q8N1A0
Other Accession	Q8CCX5 , Q2KI75 , NP_689562.1
Reactivity	Mouse
Predicted	Bovine
Host	Rabbit
Clonality	Polyclonal
Isotype	Rabbit IgG
Clone Names	RB32011
Calculated MW	34158
Antigen Region	222-250

Additional Information

Gene ID	125113
Other Names	Keratin-like protein KRT222, Keratin-222, Keratin-222 pseudogene, KRT222, KA21, KRT222P
Target/Specificity	This KRT222P antibody is generated from rabbits immunized with a KLH conjugated synthetic peptide between 222-250 amino acids from the C-terminal region of human KRT222P.
Dilution	WB~~1:1000 E~~Use at an assay dependent concentration.
Format	Purified polyclonal antibody supplied in PBS with 0.09% (W/V) sodium azide. This antibody is purified through a protein A column, followed by peptide affinity purification.
Storage	Maintain refrigerated at 2-8°C for up to 2 weeks. For long term storage store at -20°C in small aliquots to prevent freeze-thaw cycles.
Precautions	KRT222P Antibody (C-term) is for research use only and not for use in diagnostic or therapeutic procedures.

Protein Information

Name	KRT222
Synonyms	KA21, KRT222P

Background

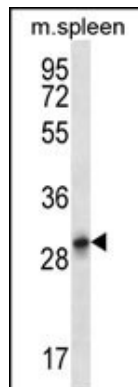
KRT222P belongs to the intermediate filament family. The exact function of KRT222P is not known.

References

Schweizer, J., et al. J. Cell Biol. 174(2):169-174(2006)

Hesse, M., et al. Eur. J. Cell Biol. 83(1):19-26(2004)

Images



KRT222P Antibody (C-term) (Cat. #AP12696b) western blot analysis in mouse spleen tissue lysates (35ug/lane). This demonstrates the KRT222P antibody detected the KRT222P protein (arrow).

Please note: All products are 'FOR RESEARCH USE ONLY. NOT FOR USE IN DIAGNOSTIC OR THERAPEUTIC PROCEDURES'.