

LRRN4CL Antibody (Center)

Affinity Purified Rabbit Polyclonal Antibody (Pab)

Catalog # AP12701c

Product Information

Application	IHC-P, WB, E
Primary Accession	Q8ND94
Other Accession	Q3TYX2 , NP_981967.1
Reactivity	Human
Predicted	Mouse
Host	Rabbit
Clonality	Polyclonal
Isotype	Rabbit IgG
Clone Names	RB32035
Calculated MW	25262
Antigen Region	117-146

Additional Information

Gene ID	221091
Other Names	LRRN4 C-terminal-like protein, LRRN4CL
Target/Specificity	This LRRN4CL antibody is generated from rabbits immunized with a KLH conjugated synthetic peptide between 117-146 amino acids from the Central region of human LRRN4CL.
Dilution	IHC-P~~1:100~500 WB~~1:1000 E~~Use at an assay dependent concentration.
Format	Purified polyclonal antibody supplied in PBS with 0.09% (W/V) sodium azide. This antibody is purified through a protein A column, followed by peptide affinity purification.
Storage	Maintain refrigerated at 2-8°C for up to 2 weeks. For long term storage store at -20°C in small aliquots to prevent freeze-thaw cycles.
Precautions	LRRN4CL Antibody (Center) is for research use only and not for use in diagnostic or therapeutic procedures.

Protein Information

Name	LRRN4CL
Cellular Location	Membrane; Single-pass type I membrane protein

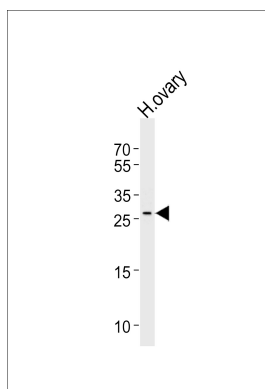
Background

LRRN4CL contains one fibronectin type-III domain.

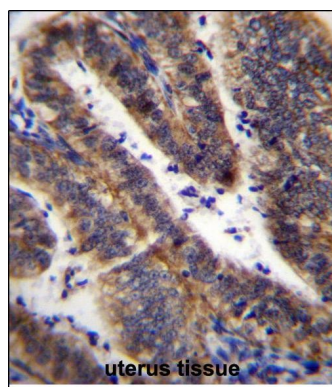
References

Clark, H.F., et al. Genome Res. 13(10):2265-2270(2003)

Images



Western blot analysis of lysate from human ovary tissue lysate, using LRRN4CL Antibody (Center)(Cat. #AP12701c). AP12701c was diluted at 1:1000 at each lane. A goat anti-rabbit IgG H&L(HRP) at 1:5000 dilution was used as the secondary antibody. Lysate at 35ug per lane.



LRRN4CL Antibody (Center) (Cat. #AP12701c) immunohistochemistry analysis in formalin fixed and paraffin embedded human uterus tissue followed by peroxidase conjugation of the secondary antibody and DAB staining. This data demonstrates the use of LRRN4CL Antibody (Center) for immunohistochemistry. Clinical relevance has not been evaluated.

Please note: All products are 'FOR RESEARCH USE ONLY. NOT FOR USE IN DIAGNOSTIC OR THERAPEUTIC PROCEDURES'.