

GTPBP10 Antibody (C-term)

Affinity Purified Rabbit Polyclonal Antibody (Pab)

Catalog # AP12715b

Product Information

Application	WB, E
Primary Accession	A4D1E9
Other Accession	Q8K013 , NP_149098.2 , NP_001036182.1
Reactivity	Human, Mouse
Host	Rabbit
Clonality	Polyclonal
Isotype	Rabbit IgG
Clone Names	RB32309
Calculated MW	42933
Antigen Region	243-271

Additional Information

Gene ID	85865
Other Names	GTP-binding protein 10, Protein obg homolog 2, ObgH2, GTPBP10, OBGH2
Target/Specificity	This GTPBP10 antibody is generated from rabbits immunized with a KLH conjugated synthetic peptide between 243-271 amino acids from the C-terminal region of human GTPBP10.
Dilution	WB~~1:1000 E~~Use at an assay dependent concentration.
Format	Purified polyclonal antibody supplied in PBS with 0.09% (W/V) sodium azide. This antibody is purified through a protein A column, followed by peptide affinity purification.
Storage	Maintain refrigerated at 2-8°C for up to 2 weeks. For long term storage store at -20°C in small aliquots to prevent freeze-thaw cycles.
Precautions	GTPBP10 Antibody (C-term) is for research use only and not for use in diagnostic or therapeutic procedures.

Protein Information

Name	GTPBP10
Synonyms	OBGH2
Function	May be involved in the ribosome maturation process. Complements an ObgE(CgtA) function in E.coli ribosome maturation. Plays a role of GTPase in

vitro. When missing, disorganization of the nucleolar architecture is observed.

Cellular Location

Nucleus, nucleolus. Chromosome. Note=Found in the dense fibrillar compartment region of the nucleolus. At the onset of mitosis moves to the chromosome surface and remains there until anaphase Gradually re-assembles into the nucleolus at late anaphase to telophase

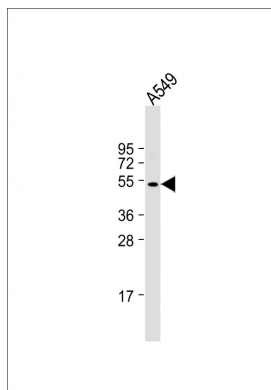
Background

Small G proteins, such as GTPBP10, act as molecular switches that play crucial roles in the regulation of fundamental cellular processes such as protein synthesis, nuclear transport, membrane trafficking, and signal transduction (Hirano et al., 2006 [PubMed 17054726]).

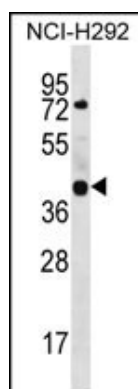
References

Hirano, Y., et al. Genes Cells 11(11):1295-1304(2006)

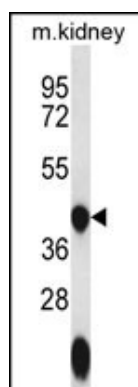
Images



Anti-GTPBP10 Antibody (C-term) at 1:1000 dilution + A549 whole cell lysates Lysates/proteins at 20 µg per lane. Secondary Goat Anti-Rabbit IgG, (H+L), Peroxidase conjugated at 1/10000 dilution. Predicted band size : 43 kDa Blocking/Dilution buffer: 5% NFDM/TBST.



GTPBP10 Antibody (C-term) (Cat. #AP12715b) western blot analysis in NCI-H292 cell line lysates (35ug/lane). This demonstrates the GTPBP10 antibody detected the GTPBP10 protein (arrow).



GTPBP10 Antibody (C-term) (Cat. #AP12715b) western blot analysis in mouse kidney tissue lysates (35ug/lane). This demonstrates the GTPBP10 antibody detected the GTPBP10 protein (arrow).

Please note: All products are 'FOR RESEARCH USE ONLY. NOT FOR USE IN DIAGNOSTIC OR THERAPEUTIC PROCEDURES'.