

STAP2 Antibody (Center)

Affinity Purified Rabbit Polyclonal Antibody (Pab)

Catalog # AP12739c

Product Information

Application	WB, IHC-P, E
Primary Accession	Q9UGK3
Other Accession	NP_001013863.1
Reactivity	Human
Host	Rabbit
Clonality	Polyclonal
Isotype	Rabbit IgG
Clone Names	RB32412
Calculated MW	44894
Antigen Region	187-216

Additional Information

Gene ID	55620
Other Names	Signal-transducing adaptor protein 2, STAP-2, Breast tumor kinase substrate, BRK substrate, STAP2, BKS
Target/Specificity	This STAP2 antibody is generated from rabbits immunized with a KLH conjugated synthetic peptide between 187-216 amino acids from the Central region of human STAP2.
Dilution	WB~~1:1000 IHC-P~~1:100~500 E~~Use at an assay dependent concentration.
Format	Purified polyclonal antibody supplied in PBS with 0.09% (W/V) sodium azide. This antibody is purified through a protein A column, followed by peptide affinity purification.
Storage	Maintain refrigerated at 2-8°C for up to 2 weeks. For long term storage store at -20°C in small aliquots to prevent freeze-thaw cycles.
Precautions	STAP2 Antibody (Center) is for research use only and not for use in diagnostic or therapeutic procedures.

Protein Information

Name	STAP2
Synonyms	BKS
Function	Substrate of protein kinase PTK6. May play a regulatory role in the

acute-phase response in systemic inflammation and may modulate STAT3 activity.

Cellular Location Cytoplasm.

Tissue Location Widely expressed.

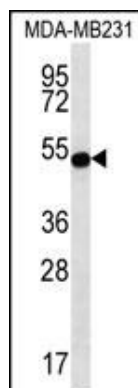
Background

This gene encodes the substrate of breast tumor kinase, an Src-type non-receptor tyrosine kinase. The encoded protein possesses domains and several tyrosine phosphorylation sites characteristic of adaptor proteins that mediate the interactions linking proteins involved in signal transduction pathways. Alternative splicing results in multiple transcript variants.

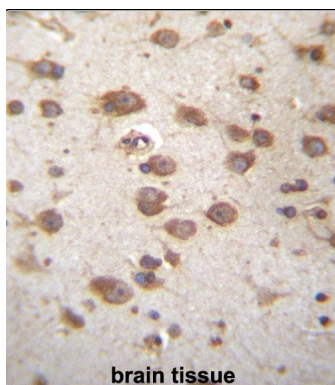
References

Shimada, M., et al. Hum. Genet. 128(4):433-441(2010)
Sekine, Y., et al. J. Immunol. 183(12):7966-7974(2009)
Sekine, Y., et al. Biochem. Biophys. Res. Commun. 384(2):187-192(2009)
Ikeda, O., et al. Biochem. Biophys. Res. Commun. 384(1):71-75(2009)
Ikeda, O., et al. Mol. Cell. Biol. 28(16):5027-5042(2008)

Images



STAP2 Antibody (Center) (Cat. #AP12739c) western blot analysis in MDA-MB231 cell line lysates (35ug/lane). This demonstrates the STAP2 antibody detected the STAP2 protein (arrow).



STAP2 Antibody (Center) (Cat. #AP12739c) immunohistochemistry analysis in formalin fixed and paraffin embedded human brain tissue followed by peroxidase conjugation of the secondary antibody and DAB staining. This data demonstrates the use of STAP2 Antibody (Center) for immunohistochemistry. Clinical relevance has not been evaluated.

Please note: All products are 'FOR RESEARCH USE ONLY. NOT FOR USE IN DIAGNOSTIC OR THERAPEUTIC PROCEDURES'.