

# WHSC1L1 Antibody (N-term)

Purified Rabbit Polyclonal Antibody (Pab)

Catalog # AP12757a

## Product Information

---

<b>Application</b>	WB, E
<b>Primary Accession</b>	<a href="#">Q9BZ95</a>
<b>Other Accession</b>	<a href="#">NP_060248.2</a> , <a href="#">NP_075447.1</a>
<b>Reactivity</b>	Human, Mouse
<b>Host</b>	Rabbit
<b>Clonality</b>	Polyclonal
<b>Isotype</b>	Rabbit IgG
<b>Clone Names</b>	RB12677
<b>Calculated MW</b>	161613
<b>Antigen Region</b>	188-217

## Additional Information

---

<b>Gene ID</b>	54904
<b>Other Names</b>	Histone-lysine N-methyltransferase NSD3, Nuclear SET domain-containing protein 3, Protein whistle, WHSC1-like 1 isoform 9 with methyltransferase activity to lysine, Wolf-Hirschhorn syndrome candidate 1-like protein 1, WHSC1-like protein 1, WHSC1L1, NSD3
<b>Target/Specificity</b>	This WHSC1L1 antibody is generated from rabbits immunized with a KLH conjugated synthetic peptide between 188-217 amino acids from the N-terminal region of human WHSC1L1.
<b>Dilution</b>	WB~~1:1000 E~~Use at an assay dependent concentration.
<b>Format</b>	Purified polyclonal antibody supplied in PBS with 0.09% (W/V) sodium azide. This antibody is prepared by Saturated Ammonium Sulfate (SAS) precipitation followed by dialysis against PBS.
<b>Storage</b>	Maintain refrigerated at 2-8°C for up to 2 weeks. For long term storage store at -20°C in small aliquots to prevent freeze-thaw cycles.
<b>Precautions</b>	WHSC1L1 Antibody (N-term) is for research use only and not for use in diagnostic or therapeutic procedures.

## Protein Information

---

<b>Name</b>	NSD3 ( <a href="#">HGNC:12767</a> )
<b>Synonyms</b>	WHSC1L1

<b>Function</b>	Histone methyltransferase. Preferentially dimethylates 'Lys- 4' and 'Lys-27' of histone H3 forming H3K4me2 and H3K27me2. H3 'Lys-4' methylation represents a specific tag for epigenetic transcriptional activation, while 'Lys-27' is a mark for transcriptional repression.
<b>Cellular Location</b>	Nucleus. Chromosome.
<b>Tissue Location</b>	Highly expressed in brain, heart and skeletal muscle. Expressed at lower level in liver and lung

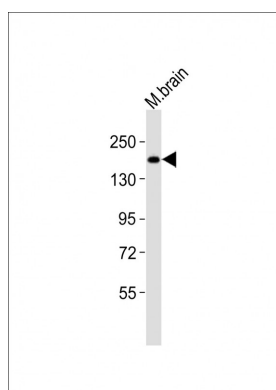
## Background

This gene is related to the Wolf-Hirschhorn syndrome candidate-1 gene and encodes a protein with PWWP (proline-tryptophan-tryptophan-proline) domains. The function of the protein has not been determined. Two alternatively spliced variants have been described.

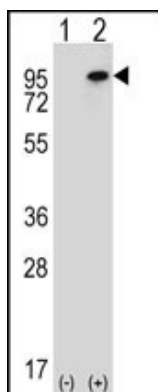
## References

Zhou, Z., et al. Biochem. Biophys. Res. Commun. 398(3):565-570(2010)  
Kim, S.M., et al. Biochem. Biophys. Res. Commun. 345(1):318-323(2006)  
Tonon, G., et al. Proc. Natl. Acad. Sci. U.S.A. 102(27):9625-9630(2005)  
Rosati, R., et al. Blood 99(10):3857-3860(2002)  
Stec, I., et al. Genomics 76 (1-3), 5-8 (2001) :

## Images



Anti-WHSC1L1 Antibody (N-term) at 1:2000 dilution + mouse brain lysates. Lysates/proteins at 20 µg per lane. Secondary Goat Anti-Rabbit IgG, (H+L), Peroxidase conjugated at 1/10000 dilution. Predicted band size : 162 kDa. Blocking/Dilution buffer: 5% NFDM/TBST.



Western blot analysis of WHSC1L1 (arrow) using rabbit polyclonal WHSC1L1 Antibody (N-term) (Cat. #AP12757a). 293 cell lysates (2 µg/lane) either nontransfected (Lane 1) or transiently transfected (Lane 2) with the WHSC1L1 gene.

Please note: All products are 'FOR RESEARCH USE ONLY. NOT FOR USE IN DIAGNOSTIC OR THERAPEUTIC PROCEDURES'.