

CTSO Antibody (N-term)

Affinity Purified Rabbit Polyclonal Antibody (Pab)

Catalog # AP12765a

Product Information

Application	WB, IHC-P, E
Primary Accession	P43234
Other Accession	NP_001325.1
Reactivity	Human
Host	Rabbit
Clonality	Polyclonal
Isotype	Rabbit IgG
Clone Names	RB19259
Calculated MW	35958
Antigen Region	69-98

Additional Information

Gene ID	1519
Other Names	Cathepsin O, CTSO, CTSO1
Target/Specificity	This CTSO antibody is generated from rabbits immunized with a KLH conjugated synthetic peptide between 69-98 amino acids from the N-terminal region of human CTSO.
Dilution	WB~~1:1000 IHC-P~~1:100~500 E~~Use at an assay dependent concentration.
Format	Purified polyclonal antibody supplied in PBS with 0.09% (W/V) sodium azide. This antibody is purified through a protein A column, followed by peptide affinity purification.
Storage	Maintain refrigerated at 2-8°C for up to 2 weeks. For long term storage store at -20°C in small aliquots to prevent freeze-thaw cycles.
Precautions	CTSO Antibody (N-term) is for research use only and not for use in diagnostic or therapeutic procedures.

Protein Information

Name	CTSO
Synonyms	CTSO1
Function	Proteolytic enzyme possibly involved in normal cellular protein degradation and turnover.

Cellular Location	Lysosome.
Tissue Location	Expressed in all tissues examined. High levels seen in the ovary, kidney and placenta while low levels seen in thymus and skeletal muscle

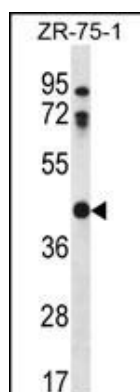
Background

The protein encoded by the gene is a cysteine proteinase and a member of the papain superfamily. This proteolytic enzyme is involved in cellular protein degradation and turnover. The recombinant form of this enzyme was shown to degrade synthetic peptides typically used as substrates for cysteine proteinases and its proteolytic activity was abolished by an inhibitor of cyteine proteinase.

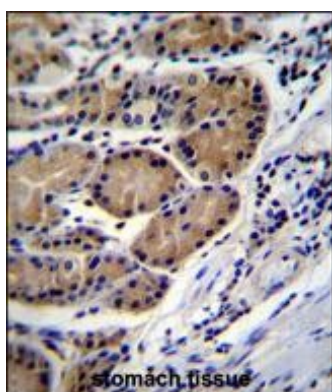
References

Roeske, D., et al. Mol. Psychiatry (2009) In press :
Lamesch, P., et al. Genomics 89(3):307-315(2007)
Santamaria, I., et al. Genomics 53(2):231-234(1998)
Shi, G.P., et al. FEBS Lett. 357(2):129-134(1995)
Velasco, G., et al. J. Biol. Chem. 269(43):27136-27142(1994)

Images



CTSO Antibody (N-term) (Cat. #AP12765a) western blot analysis in ZR-75-1 cell line lysates (35ug/lane). This demonstrates the CTSO antibody detected the CTSO protein (arrow).



CTSO Antibody (N-term) (Cat. #AP12765a) immunohistochemistry analysis in formalin fixed and paraffin embedded human stomach tissue followed by peroxidase conjugation of the secondary antibody and DAB staining. This data demonstrates the use of CTSO Antibody (N-term) for immunohistochemistry. Clinical relevance has not been evaluated.

Please note: All products are 'FOR RESEARCH USE ONLY. NOT FOR USE IN DIAGNOSTIC OR THERAPEUTIC PROCEDURES'.