

PLEKHH1 Antibody (C-term)

Affinity Purified Rabbit Polyclonal Antibody (Pab)

Catalog # AP12777b

Product Information

Application	WB, IHC-P, FC, E
Primary Accession	Q9ULM0
Other Accession	NP_065766.1
Reactivity	Human
Host	Rabbit
Clonality	Polyclonal
Isotype	Rabbit IgG
Clone Names	RB28784
Calculated MW	151232
Antigen Region	1082-1110

Additional Information

Gene ID	57475
Other Names	Pleckstrin homology domain-containing family H member 1, PH domain-containing family H member 1, PLEKHH1, KIAA1200
Target/Specificity	This PLEKHH1 antibody is generated from rabbits immunized with a KLH conjugated synthetic peptide between 1082-1110 amino acids from the C-terminal region of human PLEKHH1.
Dilution	WB~~1:1000 IHC-P~~1:100~500 FC~~1:10~50 E~~Use at an assay dependent concentration.
Format	Purified polyclonal antibody supplied in PBS with 0.09% (W/V) sodium azide. This antibody is purified through a protein A column, followed by peptide affinity purification.
Storage	Maintain refrigerated at 2-8°C for up to 2 weeks. For long term storage store at -20°C in small aliquots to prevent freeze-thaw cycles.
Precautions	PLEKHH1 Antibody (C-term) is for research use only and not for use in diagnostic or therapeutic procedures.

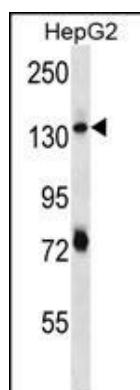
Protein Information

Name	PLEKHH1
Synonyms	KIAA1200

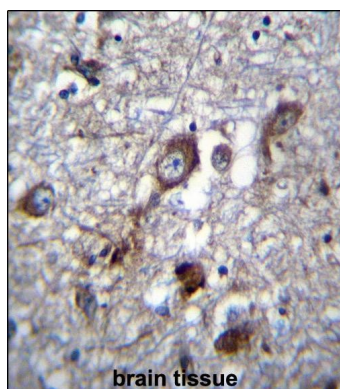
References

Kimura, K., et al. Genome Res. 16(1):55-65(2006)

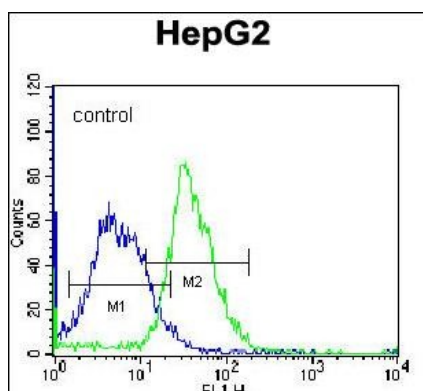
Images



PLEKHH1 Antibody (C-term) (Cat. #AP12777b) western blot analysis in HepG2 cell line lysates (35ug/lane). This demonstrates the PLEKHH1 antibody detected the PLEKHH1 protein (arrow).



PLEKHH1 Antibody (C-term) (Cat. #AP12777b) immunohistochemistry analysis in formalin fixed and paraffin embedded human brain tissue followed by peroxidase conjugation of the secondary antibody and DAB staining. This data demonstrates the use of PLEKHH1 Antibody (C-term) for immunohistochemistry. Clinical relevance has not been evaluated.



PLEKHH1 Antibody (C-term) (Cat. #AP12777b) flow cytometric analysis of K562 cells (right histogram) compared to a negative control cell (left histogram). FITC-conjugated donkey-anti-rabbit secondary antibodies were used for the analysis.

Please note: All products are 'FOR RESEARCH USE ONLY. NOT FOR USE IN DIAGNOSTIC OR THERAPEUTIC PROCEDURES'.