

# C6orf168 Antibody (C-term)

Affinity Purified Rabbit Polyclonal Antibody (Pab)

Catalog # AP12790b

## Product Information

---

Application	WB, IHC-P, E
Primary Accession	<a href="#">Q5TGI0</a>
Other Accession	<a href="#">D3ZAT9</a> , <a href="#">Q3UMF9</a> , <a href="#">NP_115900.1</a>
Reactivity	Human, Rat, Mouse
Predicted	Mouse, Rat
Host	Rabbit
Clonality	Polyclonal
Isotype	Rabbit IgG
Clone Names	RB31433
Calculated MW	46843
Antigen Region	352-381

## Additional Information

---

Gene ID	84553
Other Names	Failed axon connections homolog, FAXC, C6orf168
Target/Specificity	This C6orf168 antibody is generated from rabbits immunized with a KLH conjugated synthetic peptide between 352-381 amino acids from the C-terminal region of human C6orf168.
Dilution	WB~~1:1000 IHC-P~~1:100~500 E~~Use at an assay dependent concentration.
Format	Purified polyclonal antibody supplied in PBS with 0.05% (V/V) Proclin 300. This antibody is prepared by Saturated Ammonium Sulfate (SAS) precipitation followed by dialysis against PBS.
Storage	Maintain refrigerated at 2-8°C for up to 2 weeks. For long term storage store at -20°C in small aliquots to prevent freeze-thaw cycles.
Precautions	C6orf168 Antibody (C-term) is for research use only and not for use in diagnostic or therapeutic procedures.

## Protein Information

---

Name	FAXC
Synonyms	C6orf168
Function	May play a role in axonal development.

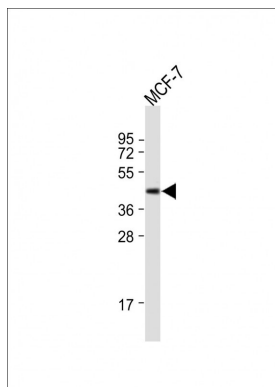
## References

---

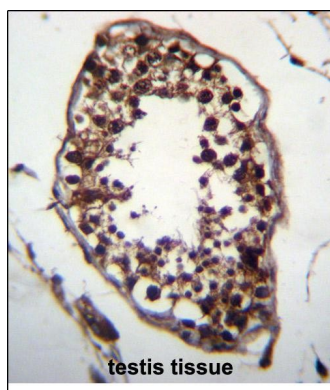
Stein, J.L., et al. Neuroimage 53(3):1160-1174(2010)  
Mungall, A.J., et al. Nature 425(6960):805-811(2003)

## Images

---



All lanes : Anti-C6orf168 Antibody (C-term) at 1:1000 dilution Lane 1: MCF-7 whole cell lysate Lysates/proteins at 20 µg per lane. Secondary Goat Anti-Rabbit IgG, (H+L), Peroxidase conjugated (ASP1615) at 1/15000 dilution. Observed band size : 47kDa Blocking/Dilution buffer: 5% NFDM/TBST.



C6orf168 Antibody (C-term) (Cat. #AP12790b) immunohistochemistry analysis in formalin fixed and paraffin embedded human testis tissue followed by peroxidase conjugation of the secondary antibody and DAB staining. This data demonstrates the use of C6orf168 Antibody (C-term) for immunohistochemistry. Clinical relevance has not been evaluated.

Please note: All products are 'FOR RESEARCH USE ONLY. NOT FOR USE IN DIAGNOSTIC OR THERAPEUTIC PROCEDURES'.