

# PTMS Antibody (C-term)

Affinity Purified Rabbit Polyclonal Antibody (Pab)

Catalog # AP12818b

## Product Information

---

<b>Application</b>	WB, FC, E
<b>Primary Accession</b>	<a href="#">P20962</a>
<b>Other Accession</b>	<a href="#">P04550</a> , <a href="#">Q9D0J8</a> , <a href="#">P08814</a> , <a href="#">NP_002815.3</a>
<b>Reactivity</b>	Human
<b>Predicted</b>	Bovine, Mouse, Rat
<b>Host</b>	Rabbit
<b>Clonality</b>	Polyclonal
<b>Isotype</b>	Rabbit IgG
<b>Clone Names</b>	RB32484
<b>Calculated MW</b>	11530
<b>Antigen Region</b>	72-102

## Additional Information

---

<b>Gene ID</b>	5763
<b>Other Names</b>	Parathymosin, PTMS
<b>Target/Specificity</b>	This PTMS antibody is generated from rabbits immunized with a KLH conjugated synthetic peptide between 72-102 amino acids from the C-terminal region of human PTMS.
<b>Dilution</b>	WB~~1:2000 FC~~1:10~50 E~~Use at an assay dependent concentration.
<b>Format</b>	Purified polyclonal antibody supplied in PBS with 0.09% (W/V) sodium azide. This antibody is purified through a protein A column, followed by peptide affinity purification.
<b>Storage</b>	Maintain refrigerated at 2-8°C for up to 2 weeks. For long term storage store at -20°C in small aliquots to prevent freeze-thaw cycles.
<b>Precautions</b>	PTMS Antibody (C-term) is for research use only and not for use in diagnostic or therapeutic procedures.

## Protein Information

---

<b>Name</b>	PTMS
<b>Function</b>	Parathymosin may mediate immune function by blocking the effect of prothymosin alpha which confers resistance to certain opportunistic infections.

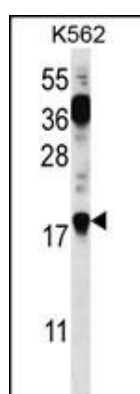
## Background

Parathymosin may mediate immune function by blocking the effect of prothymosin alpha which confers resistance to certain opportunistic infections.

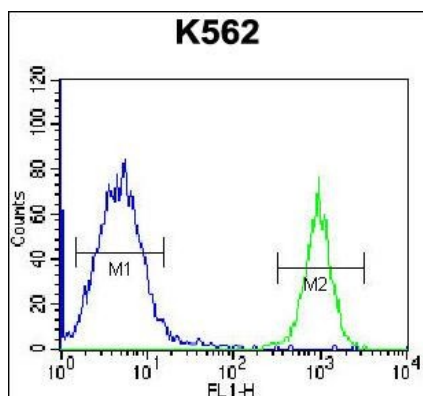
## References

Davila, S., et al. Genes Immun. 11(3):232-238(2010)  
Hosgood, H.D. III, et al. Occup Environ Med 66(12):848-853(2009)  
Chapuis, J., et al. Mol. Psychiatry 14(11):1004-1016(2009)  
Martic, G., et al. J. Biol. Chem. 280(16):16143-16150(2005)  
Hannappel, E., et al. Vitam. Horm. 66, 257-296 (2003) :

## Images



PTMS Antibody (C-term) (Cat. #AP12818b) western blot analysis in K562 cell line lysates (35ug/lane). This demonstrates the PTMS antibody detected the PTMS protein (arrow).



PTMS Antibody (C-term) (Cat. #AP12818b) flow cytometric analysis of K562 cells (right histogram) compared to a negative control cell (left histogram). FITC-conjugated goat-anti-rabbit secondary antibodies were used for the analysis.

Please note: All products are 'FOR RESEARCH USE ONLY. NOT FOR USE IN DIAGNOSTIC OR THERAPEUTIC PROCEDURES'.