

RBM28 Antibody (N-term)

Affinity Purified Rabbit Polyclonal Antibody (Pab)

Catalog # AP12819a

Product Information

Application	WB, E
Primary Accession	Q9NW13
Other Accession	NP_060547.2 , NP_001159607.1
Reactivity	Human
Host	Rabbit
Clonality	Polyclonal
Isotype	Rabbit IgG
Clone Names	RB32488
Calculated MW	85738
Antigen Region	62-91

Additional Information

Gene ID	55131
Other Names	RNA-binding protein 28, RNA-binding motif protein 28, RBM28
Target/Specificity	This RBM28 antibody is generated from rabbits immunized with a KLH conjugated synthetic peptide between 62-91 amino acids from the N-terminal region of human RBM28.
Dilution	WB~~1:1000 E~~Use at an assay dependent concentration.
Format	Purified polyclonal antibody supplied in PBS with 0.09% (W/V) sodium azide. This antibody is purified through a protein A column, followed by peptide affinity purification.
Storage	Maintain refrigerated at 2-8°C for up to 2 weeks. For long term storage store at -20°C in small aliquots to prevent freeze-thaw cycles.
Precautions	RBM28 Antibody (N-term) is for research use only and not for use in diagnostic or therapeutic procedures.

Protein Information

Name	RBM28
Function	Nucleolar component of the spliceosomal ribonucleoprotein complexes.
Cellular Location	Nucleus, nucleolus {ECO:0000269 PubMed:12429849, ECO:0000269 PubMed:17081119, ECO:0000269 Ref.7}

Tissue Location

Ubiquitously expressed.

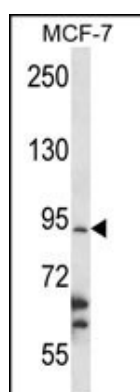
Background

The protein encoded by this gene is a specific nucleolar component of the spliceosomal small nuclear ribonucleoprotein (snRNP) complexes. It specifically associates with U1, U2, U4, U5, and U6 small nuclear RNAs (snRNAs), possibly coordinating their transition through the nucleolus. Mutation in this gene causes alopecia, progressive neurological defects, and endocrinopathy (ANE syndrome), a pleiotropic and clinically heterogeneous disorder. Alternatively spliced transcript variants encoding different isoforms have been found for this gene.

References

Spiegel, R., et al. Eur. J. Endocrinol. 162(6):1021-1025(2010)
Nousbeck, J., et al. Am. J. Hum. Genet. 82(5):1114-1121(2008)
Damianov, A., et al. Biol. Chem. 387 (10-11), 1455-1460 (2006) :
Andersen, J.S., et al. Nature 433(7021):77-83(2005)
Scherl, A., et al. Mol. Biol. Cell 13(11):4100-4109(2002)

Images



RBM28 Antibody (N-term) (Cat. #AP12819a) western blot analysis in MCF-7 cell line lysates (35ug/lane). This demonstrates the RBM28 antibody detected the RBM28 protein (arrow).

Please note: All products are 'FOR RESEARCH USE ONLY. NOT FOR USE IN DIAGNOSTIC OR THERAPEUTIC PROCEDURES'.