

# DSN1 Antibody (C-term)

Affinity Purified Rabbit Polyclonal Antibody (Pab)

Catalog # AP12820b

## Product Information

---

Application	WB, E
Primary Accession	<a href="#">Q9H410</a>
Other Accession	<a href="#">NP_001138787.1</a> , <a href="#">NP_079194.3</a> , <a href="#">NP_001138788.1</a>
Reactivity	Human
Host	Rabbit
Clonality	Polyclonal
Isotype	Rabbit IgG
Clone Names	RB32490
Calculated MW	40067
Antigen Region	257-286

## Additional Information

---

Gene ID	79980
Other Names	Kinetochore-associated protein DSN1 homolog, DSN1, C20orf172, MIS13
Target/Specificity	This DSN1 antibody is generated from rabbits immunized with a KLH conjugated synthetic peptide between 257-286 amino acids from the C-terminal region of human DSN1.
Dilution	WB~~1:1000 E~~Use at an assay dependent concentration.
Format	Purified polyclonal antibody supplied in PBS with 0.09% (W/V) sodium azide. This antibody is purified through a protein A column, followed by peptide affinity purification.
Storage	Maintain refrigerated at 2-8°C for up to 2 weeks. For long term storage store at -20°C in small aliquots to prevent freeze-thaw cycles.
Precautions	DSN1 Antibody (C-term) is for research use only and not for use in diagnostic or therapeutic procedures.

## Protein Information

---

Name	DSN1
Synonyms	C20orf172, MIS13
Function	Part of the MIS12 complex which is required for normal chromosome alignment and segregation and kinetochore formation during mitosis.

**Cellular Location**

Nucleus. Chromosome, centromere, kinetochore Note=Associated with the kinetochore.

**Background**

---

This gene encodes a kinetochore protein that functions as part of the minichromosome instability-12 centromere complex. The encoded protein is required for proper kinetochore assembly and progression through the cell cycle. Alternative splicing results in multiple transcript variants.

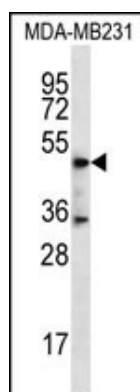
**References**

---

Yang, Y., et al. J. Biol. Chem. 283(39):26726-26736(2008)  
Cheeseman, I.M., et al. Nat. Rev. Mol. Cell Biol. 9(1):33-46(2008)  
Kiyomitsu, T., et al. Dev. Cell 13(5):663-676(2007)  
Lamesch, P., et al. Genomics 89(3):307-315(2007)  
Kline, S.L., et al. J. Cell Biol. 173(1):9-17(2006)

**Images**

---



DSN1 Antibody (C-term) (Cat. #AP12820b) western blot analysis in MDA-MB231 cell line lysates (35ug/lane). This demonstrates the DSN1 antibody detected the DSN1 protein (arrow).

Please note: All products are 'FOR RESEARCH USE ONLY. NOT FOR USE IN DIAGNOSTIC OR THERAPEUTIC PROCEDURES'.