

# SCHIP1 Antibody (Center)

Affinity Purified Rabbit Polyclonal Antibody (Pab)

Catalog # AP12855c

## Product Information

---

<b>Application</b>	WB, IHC-P, FC, E
<b>Primary Accession</b>	<a href="#">Q9P0W5</a>
<b>Other Accession</b>	<a href="#">NP_055390.1</a>
<b>Reactivity</b>	Human
<b>Host</b>	Rabbit
<b>Clonality</b>	Polyclonal
<b>Isotype</b>	Rabbit IgG
<b>Clone Names</b>	RB32627
<b>Antigen Region</b>	90-118

## Additional Information

---

<b>Other Names</b>	Schwannomin-interacting protein 1, SCHIP-1, SCHIP1
<b>Target/Specificity</b>	This SCHIP1 antibody is generated from rabbits immunized with a KLH conjugated synthetic peptide between 90-118 amino acids from the Central region of human SCHIP1.
<b>Dilution</b>	WB~~1:1000 IHC-P~~1:100~500 FC~~1:10~50 E~~Use at an assay dependent concentration.
<b>Format</b>	Purified polyclonal antibody supplied in PBS with 0.09% (W/V) sodium azide. This antibody is purified through a protein A column, followed by peptide affinity purification.
<b>Storage</b>	Maintain refrigerated at 2-8°C for up to 2 weeks. For long term storage store at -20°C in small aliquots to prevent freeze-thaw cycles.
<b>Precautions</b>	SCHIP1 Antibody (Center) is for research use only and not for use in diagnostic or therapeutic procedures.

## Protein Information

---

### Background

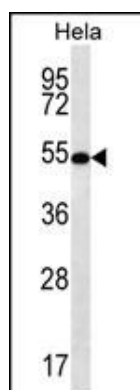
---

SCHIP1 is a novel coiled-coil protein that specifically associates with schwannomin in vitro and in vivo. Within its coiled-coil region, this protein is homologous to human FEZ proteins and the related *Caenorhabditis elegans* gene product UNC-76.

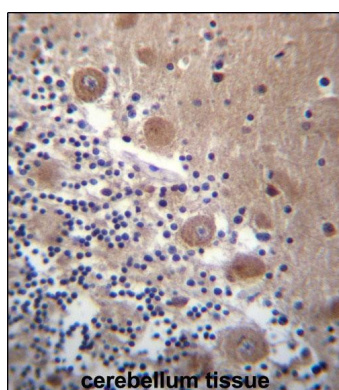
## References

Bailey, S.D., et al. Diabetes Care 33(10):2250-2253(2010)  
Rose, J.E., et al. Mol. Med. 16 (7-8), 247-253 (2010) :  
Dubois, P.C., et al. Nat. Genet. 42(4):295-302(2010)  
Talmud, P.J., et al. Am. J. Hum. Genet. 85(5):628-642(2009)  
De Jager, P.L., et al. Nat. Genet. 41(7):776-782(2009)

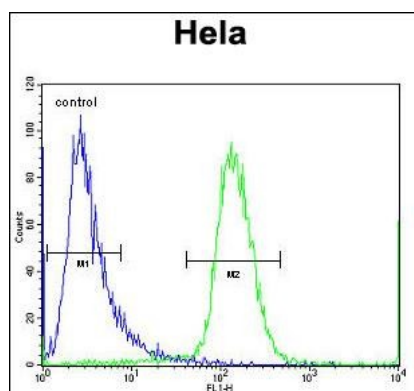
## Images



SCHIP1 Antibody (Center) (Cat. #AP12855c) western blot analysis in HeLa cell line lysates (35ug/lane). This demonstrates the SCHIP1 antibody detected the SCHIP1 protein (arrow).



SCHIP1 Antibody (Center) (Cat. #AP12855c) immunohistochemistry analysis in formalin fixed and paraffin embedded human cerebellum tissue followed by peroxidase conjugation of the secondary antibody and DAB staining. This data demonstrates the use of SCHIP1 Antibody (Center) for immunohistochemistry. Clinical relevance has not been evaluated.



SCHIP1 Antibody (Center) (Cat. #AP12855c) flow cytometric analysis of HeLa cells (right histogram) compared to a negative control cell (left histogram). FITC-conjugated goat-anti-rabbit secondary antibodies were used for the analysis.

Please note: All products are 'FOR RESEARCH USE ONLY. NOT FOR USE IN DIAGNOSTIC OR THERAPEUTIC PROCEDURES'.