

POGK Antibody (N-term)

Affinity Purified Rabbit Polyclonal Antibody (Pab)

Catalog # AP12856a

Product Information

Application	WB, E
Primary Accession	Q9P215
Other Accession	Q80TC5 , NP_060012.3
Reactivity	Human
Predicted	Mouse
Host	Rabbit
Clonality	Polyclonal
Isotype	Rabbit IgG
Clone Names	RB32631
Calculated MW	69444
Antigen Region	254-283

Additional Information

Gene ID	57645
Other Names	Pogo transposable element with KRAB domain, POGK, KIAA1513
Target/Specificity	This POGK antibody is generated from rabbits immunized with a KLH conjugated synthetic peptide between 254-283 amino acids from the N-terminal region of human POGK.
Dilution	WB~~1:1000 E~~Use at an assay dependent concentration.
Format	Purified polyclonal antibody supplied in PBS with 0.09% (W/V) sodium azide. This antibody is purified through a protein A column, followed by peptide affinity purification.
Storage	Maintain refrigerated at 2-8°C for up to 2 weeks. For long term storage store at -20°C in small aliquots to prevent freeze-thaw cycles.
Precautions	POGK Antibody (N-term) is for research use only and not for use in diagnostic or therapeutic procedures.

Protein Information

Name	POGK
Synonyms	KIAA1513
Cellular Location	Nucleus.

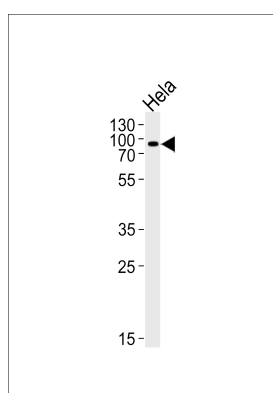
Background

The exact function of the protein encoded by this gene is not known. However, this gene product contains a KRAB domain (which is involved in protein-protein interactions) at the N-terminus, and a transposase domain at the C-terminus, suggesting that it may belong to the family of DNA-mediated transposons in human.

References

Ehret, G.B., et al. *Eur. J. Hum. Genet.* 17(12):1650-1657(2009)
Cheung, C.L., et al. *Hum. Mol. Genet.* 18(4):679-687(2009)
Beausoleil, S.A., et al. *Nat. Biotechnol.* 24(10):1285-1292(2006)
Greenhalf, W., et al. *Yeast* 15(13):1307-1321(1999)

Images



Western blot analysis of lysate from HeLa cell line, using POGK Antibody (N-term)(Cat. #AP12856a). AP12856a was diluted at 1:1000 at each lane. A goat anti-rabbit IgG H&L(HRP) at 1:5000 dilution was used as the secondary antibody. Lysate at 35ug per lane.

Please note: All products are 'FOR RESEARCH USE ONLY. NOT FOR USE IN DIAGNOSTIC OR THERAPEUTIC PROCEDURES'.