

NUP35 Antibody (C-term)

Affinity Purified Rabbit Polyclonal Antibody (Pab)

Catalog # AP12864b

Product Information

Application	WB, FC, E
Primary Accession	Q8NFH5
Other Accession	NP_612142.2
Reactivity	Human
Host	Rabbit
Clonality	Polyclonal
Isotype	Rabbit IgG
Clone Names	RB32647
Calculated MW	34774
Antigen Region	289-318

Additional Information

Gene ID	129401
Other Names	Nucleoporin NUP53, 35 kDa nucleoporin, Mitotic phosphoprotein 44, MP-44, Nuclear pore complex protein Nup53, Nucleoporin Nup35, NUP35, MP44, NUP53
Target/Specificity	This NUP35 antibody is generated from rabbits immunized with a KLH conjugated synthetic peptide between 289-318 amino acids from the C-terminal region of human NUP35.
Dilution	WB~~1:1000 FC~~1:10~50 E~~Use at an assay dependent concentration.
Format	Purified polyclonal antibody supplied in PBS with 0.09% (W/V) sodium azide. This antibody is purified through a protein A column, followed by peptide affinity purification.
Storage	Maintain refrigerated at 2-8°C for up to 2 weeks. For long term storage store at -20°C in small aliquots to prevent freeze-thaw cycles.
Precautions	NUP35 Antibody (C-term) is for research use only and not for use in diagnostic or therapeutic procedures.

Protein Information

Name	NUP35
Synonyms	MP44, NUP53

Function

Functions as a component of the nuclear pore complex (NPC). NPC components, collectively referred to as nucleoporins (NUPs), can play the role of both NPC structural components and of docking or interaction partners for transiently associated nuclear transport factors. May play a role in the association of MAD1 with the NPC.

Cellular Location

Nucleus, nuclear pore complex. Nucleus membrane; Peripheral membrane protein. Note=Tightly associated with the nuclear membrane and lamina.

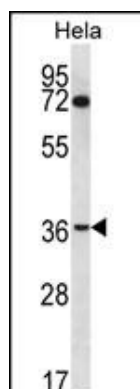
Background

This gene encodes a member of the nucleoporin family. The protein is localized to the nuclear rim and is part of the nuclear pore complex (NPC). All molecules entering or leaving the nucleus either diffuse through or are actively transported by the NPC.

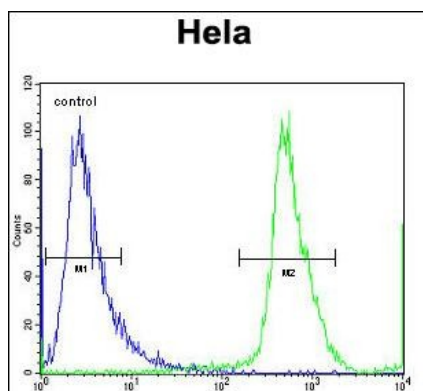
References

Ichikawa, S., et al. J. Bone Miner. Res. 25(8):1821-1829(2010)
Hawryluk-Gara, L.A., et al. Mol. Biol. Cell 19(4):1753-1762(2008)
Sugiyama, N., et al. Mol. Cell Proteomics 6(6):1103-1109(2007)
Lamesch, P., et al. Genomics 89(3):307-315(2007)
Olsen, J.V., et al. Cell 127(3):635-648(2006)

Images



NUP35 Antibody (C-term) (Cat. #AP12864b) western blot analysis in HeLa cell line lysates (35ug/lane). This demonstrates the NUP35 antibody detected the NUP35 protein (arrow).



NUP35 Antibody (C-term) (Cat. #AP12864b) flow cytometric analysis of HeLa cells (right histogram) compared to a negative control cell (left histogram). FITC-conjugated goat-anti-rabbit secondary antibodies were used for the analysis.

Please note: All products are 'FOR RESEARCH USE ONLY. NOT FOR USE IN DIAGNOSTIC OR THERAPEUTIC PROCEDURES'.