

# Pan SUMO Antibody

Purified Rabbit Polyclonal Antibody (Pab)

Catalog # AP1290a

## Product Information

---

Application	IF, IHC-P, WB, E
Primary Accession	<a href="#">P55854</a>
Reactivity	Human, Rat, Mouse
Host	Rabbit
Clonality	Polyclonal
Isotype	Rabbit IgG
Calculated MW	11637

## Additional Information

---

Gene ID	6612
Other Names	Small ubiquitin-related modifier 3, SUMO-3, SMT3 homolog 1 {ECO:0000312 HGNC:HGNC:11124}, SUMO-2, Ubiquitin-like protein SMT3A, Smt3A, SUMO3 ( <a href="#">HGNC:11124</a> )
Target/Specificity	"This Pan SUMO antibody recognizes SUMO2 and SUMO3. This antibody is generated from rabbits immunized with a recombinant protein encoding full length human SUMO3."
Dilution	IF~~1:10~50 IHC-P~~1:100~500 WB~~1:1000 E~~Use at an assay dependent concentration.
Format	Purified polyclonal antibody supplied in PBS with 0.09% (W/V) sodium azide. This antibody is prepared by Saturated Ammonium Sulfate (SAS) precipitation followed by dialysis against PBS.
Storage	Maintain refrigerated at 2-8°C for up to 2 weeks. For long term storage store at -20°C in small aliquots to prevent freeze-thaw cycles.
Precautions	Pan SUMO Antibody is for research use only and not for use in diagnostic or therapeutic procedures.

## Protein Information

---

Name	SUMO3 ( <a href="#">HGNC:11124</a> )
Function	Ubiquitin-like protein which can be covalently attached to target lysines either as a monomer or as a lysine-linked polymer. Does not seem to be involved in protein degradation and may function as an antagonist of ubiquitin in the degradation process. Plays a role in a number of cellular processes such as nuclear transport, DNA replication and repair, mitosis and

signal transduction. Covalent attachment to its substrates requires prior activation by the E1 complex SAE1-SAE2 and linkage to the E2 enzyme UBE2I, and can be promoted by an E3 ligase such as PIAS1-4, RANBP2 or CBX4 (PubMed:[11451954](#), PubMed:[18538659](#), PubMed:[21965678](#)). Plays a role in the regulation of sumoylation status of SETX (PubMed:[24105744](#)).

**Cellular Location** Cytoplasm. Nucleus. Nucleus, PML body

**Tissue Location** Expressed predominantly in liver.

## Background

---

Covalent modification of target lysines by SUMO (small ubiquitin-like modifier) modulates processes such as protein localization, transcription, nuclear transport, mitosis, DNA replication and repair, signal transduction, and viral reproduction. SUMO does not seem to be involved in protein degradation and may in fact function as an antagonist of ubiquitin in the degradation process. The SUMO family consists of SUMO1 and closely related homologs SUMO2, SUMO3, and SUMO4. Sumoylation has been shown to regulate a wide range of proteins, including MDM2, PIAS, PML, RanGAP1, RanBP2, p53, p73, HIPK2, TEL, c-Jun, Fas, Daxx, TNFRI, Topo-I, Topo-II, PARK2, WRN, Sp100, IκB-alpha, Androgen receptor (AR), GLUT1/4, CaMK, DNMT3B, TDG, HIF1A, CHD3, EXOSC9, RAD51, and viral targets such as CMV-IE1/2, EBV-BZLF1, and HPV/BPV-E1.

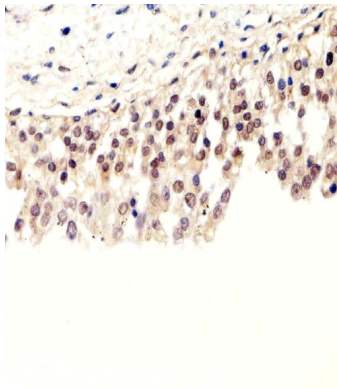
## References

---

Yang, S.H., et al., Mol. Cell 13(4):611-617 (2004).  
Bailey, D., et al., J. Biol. Chem. 279(1):692-703 (2004).  
Ling, Y., et al., Nucleic Acids Res. 32(2):598-610 (2004).  
Pountney, D.L., et al., Exp. Neurol. 184(1):436-446 (2003).  
Ohshima, T., et al., J. Biol. Chem. 278(51):50833-50842 (2003).  
Strausberg, R.L., et al., Proc. Natl. Acad. Sci. U.S.A. 99(26):16899-16903 (2002).  
Lapenta, V., et al., Genomics 40(2):362-366 (1997).

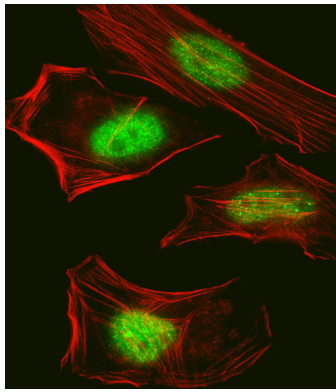
## Images

---

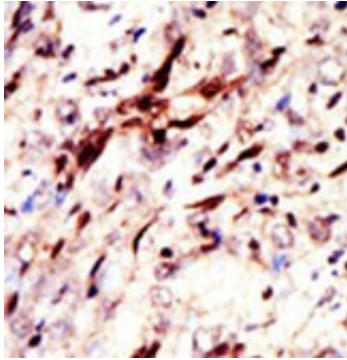


Immunohistochemical analysis of paraffin-embedded H.bladder section using Pan SUMO Antibody(Cat#AP1290a). AP1290a was diluted at 1:100 dilution. A peroxidase-conjugated goat anti-rabbit IgG at 1:400 dilution was used as the secondary antibody, followed by DAB staining.

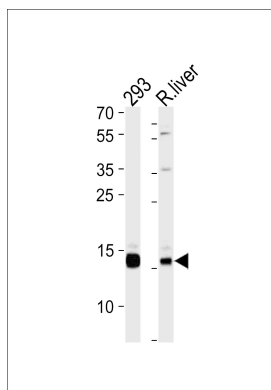
Fluorescent confocal image of Hela cell stained with Pan SUMO Antibody(Cat#AP1290a).Hela cells were fixed with 4% PFA (20 min), permeabilized with Triton X-100 (0.1%, 10 min), then incubated with Pan SUMO primary antibody (1:25, 1 h at 37°C). For secondary antibody, Alexa Fluor® 488 conjugated donkey anti-rabbit antibody (green) was used (1:400, 50 min at 37°C).Cytoplasmic actin was counterstained with Alexa Fluor® 555 (red) conjugated Phalloidin (7units/ml, 1 h at 37°C). Nuclei were counterstained with DAPI (blue) (10 µg/ml, 10 min).Pan



SUMO immunoreactivity is localized to Nucleus significantly.



Formalin-fixed and paraffin-embedded human cancer tissue reacted with the primary antibody, which was peroxidase-conjugated to the secondary antibody, followed by AEC staining. This data demonstrates the use of this antibody for immunohistochemistry; clinical relevance has not been evaluated. BC = breast carcinoma; HC = hepatocarcinoma.



SUMO3 Antibody (Cat. #AP1290a) western blot analysis in 293 cell line and rat liver tissue lysates (35ug/lane). This demonstrates the SUMO3 antibody detected the SUMO3 protein (arrow).

## Citations

- [SUMO2/3 modification of activating transcription factor 5 \(ATF5\) controls its dynamic translocation at the centrosome.](#)
- [Ehrlichia chaffeensis Exploits Host SUMOylation Pathways To Mediate Effector-Host Interactions and Promote Intracellular Survival.](#)
- [Poly-small ubiquitin-like modifier \(PolySUMO\)-binding proteins identified through a string search.](#)
- [Generation and nuclear translocation of sumoylated transmembrane fragment of cell adhesion molecule L1.](#)

Please note: All products are 'FOR RESEARCH USE ONLY. NOT FOR USE IN DIAGNOSTIC OR THERAPEUTIC PROCEDURES'.