

CSN1S1 Antibody (Center)

Affinity Purified Rabbit Polyclonal Antibody (Pab)

Catalog # AP12914c

Product Information

Application	WB, E
Primary Accession	P47710
Other Accession	NP_001881.1 , NP_001020275.1
Reactivity	Human
Host	Rabbit
Clonality	Polyclonal
Isotype	Rabbit IgG
Clone Names	RB21700
Calculated MW	21671
Antigen Region	36-65

Additional Information

Gene ID	1446
Other Names	Alpha-S1-casein, Casoxin-D, CSN1S1, CASA, CSN1
Target/Specificity	This CSN1S1 antibody is generated from rabbits immunized with a KLH conjugated synthetic peptide between 36-65 amino acids from the Central region of human CSN1S1.
Dilution	WB~~1:1000 E~~Use at an assay dependent concentration.
Format	Purified polyclonal antibody supplied in PBS with 0.09% (W/V) sodium azide. This antibody is purified through a protein A column, followed by peptide affinity purification.
Storage	Maintain refrigerated at 2-8°C for up to 2 weeks. For long term storage store at -20°C in small aliquots to prevent freeze-thaw cycles.
Precautions	CSN1S1 Antibody (Center) is for research use only and not for use in diagnostic or therapeutic procedures.

Protein Information

Name	CSN1S1
Synonyms	CASA, CSN1
Function	Important role in the capacity of milk to transport calcium phosphate.

Cellular Location	Secreted.
Tissue Location	Mammary gland specific. Secreted in milk.

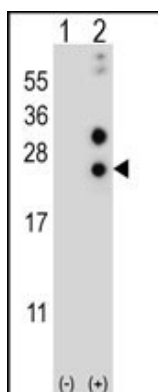
Background

CSN1S1 plays an important role in the capacity of milk to transport calcium phosphate. Casoxin D acts as opioid antagonist and has vasorelaxing activity mediated by bradykinin B1 receptors.

References

Xu, K., et al. Prostate Cancer Prostatic Dis. 9(3):293-297(2006)
 Magklara, A., et al. Biochem. Biophys. Res. Commun. 307(4):948-955(2003)
 Kashiwaba, M., et al. FEBS Lett. 538 (1-3), 197-202 (2003) :
 Harrington, J.J., et al. Nat. Biotechnol. 19(5):440-445(2001)
 Gray, C.W., et al. Eur. J. Biochem. 267(18):5699-5710(2000)

Images



Western blot analysis of CSN1S1 (arrow) using rabbit polyclonal CSN1S1 Antibody (Center) (Cat. #AP12914c). 293 cell lysates (2 ug/lane) either nontransfected (Lane 1) or transiently transfected (Lane 2) with the CSN1S1 gene.

Please note: All products are 'FOR RESEARCH USE ONLY. NOT FOR USE IN DIAGNOSTIC OR THERAPEUTIC PROCEDURES'.