

# RPL35 Antibody (C-term)

Affinity Purified Rabbit Polyclonal Antibody (Pab)

Catalog # AP12959b

## Product Information

---

<b>Application</b>	WB, IHC-P, E
<b>Primary Accession</b>	<a href="#">P42766</a>
<b>Other Accession</b>	<a href="#">Q29361</a> , <a href="#">Q98TF7</a> , <a href="#">Q3MHM7</a> , <a href="#">NP_009140.1</a>
<b>Reactivity</b>	Human, Mouse
<b>Predicted</b>	Bovine, Chicken, Pig
<b>Host</b>	Rabbit
<b>Clonality</b>	Polyclonal
<b>Isotype</b>	Rabbit IgG
<b>Clone Names</b>	RB32150
<b>Calculated MW</b>	14551
<b>Antigen Region</b>	86-115

## Additional Information

---

<b>Gene ID</b>	11224
<b>Other Names</b>	60S ribosomal protein L35, RPL35
<b>Target/Specificity</b>	This RPL35 antibody is generated from rabbits immunized with a KLH conjugated synthetic peptide between 86-115 amino acids from the C-terminal region of human RPL35.
<b>Dilution</b>	WB~~1:1000 IHC-P~~1:100~500 E~~Use at an assay dependent concentration.
<b>Format</b>	Purified polyclonal antibody supplied in PBS with 0.09% (W/V) sodium azide. This antibody is purified through a protein A column, followed by peptide affinity purification.
<b>Storage</b>	Maintain refrigerated at 2-8°C for up to 2 weeks. For long term storage store at -20°C in small aliquots to prevent freeze-thaw cycles.
<b>Precautions</b>	RPL35 Antibody (C-term) is for research use only and not for use in diagnostic or therapeutic procedures.

## Protein Information

---

<b>Name</b>	RPL35
<b>Function</b>	Component of the large ribosomal subunit (PubMed: <a href="#">12962325</a> , PubMed: <a href="#">23636399</a> , PubMed: <a href="#">32669547</a> ). The ribosome is a large ribonucleoprotein complex responsible for the synthesis of proteins in the

cell (PubMed:[12962325](#), PubMed:[23636399](#), PubMed:[32669547](#)).

## Cellular Location

Cytoplasm.

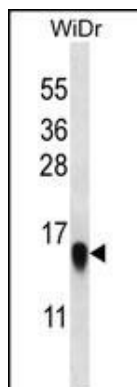
## Background

Ribosomes, the organelles that catalyze protein synthesis, consist of a small 40S subunit and a large 60S subunit. Together these subunits are composed of 4 RNA species and approximately 80 structurally distinct proteins. This gene encodes a ribosomal protein that is a component of the 60S subunit. The protein belongs to the L29P family of ribosomal proteins. It is located in the cytoplasm. As is typical for genes encoding ribosomal proteins, there are multiple processed pseudogenes of this gene dispersed through the genome.

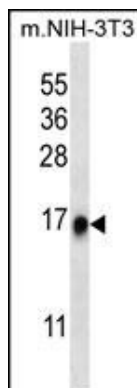
## References

Chen, I.J., et al. *Biochem. Cell Biol.* 86(3):271-277(2008)  
Ewing, R.M., et al. *Mol. Syst. Biol.* 3, 89 (2007) :  
Oh, J.H., et al. *Mamm. Genome* 16(12):942-954(2005)  
Andersen, J.S., et al. *Nature* 433(7021):77-83(2005)  
Humphray, S.J., et al. *Nature* 429(6990):369-374(2004)

## Images

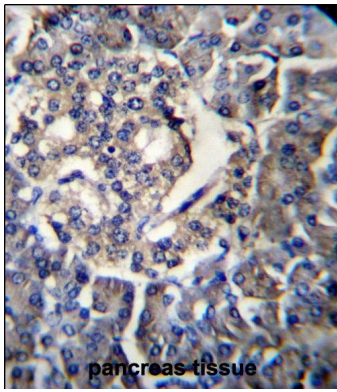


RPL35 Antibody (C-term) (Cat. #AP12959b) western blot analysis in WiDr cell line lysates (35ug/lane). This demonstrates the RPL35 antibody detected the RPL35 protein (arrow).



RPL35 Antibody (C-term) (Cat. #AP12959b) western blot analysis in mouse NIH-3T3 cell line lysates (35ug/lane). This demonstrates the RPL35 antibody detected the RPL35 protein (arrow).

RPL35 Antibody (C-term) (Cat. #AP12959b) immunohistochemistry analysis in formalin fixed and paraffin embedded human pancreas tissue followed by peroxidase conjugation of the secondary antibody and DAB staining. This data demonstrates the use of RPL35 Antibody (C-term) for immunohistochemistry. Clinical relevance has not been



evaluated.

Please note: All products are 'FOR RESEARCH USE ONLY. NOT FOR USE IN DIAGNOSTIC OR THERAPEUTIC PROCEDURES'.